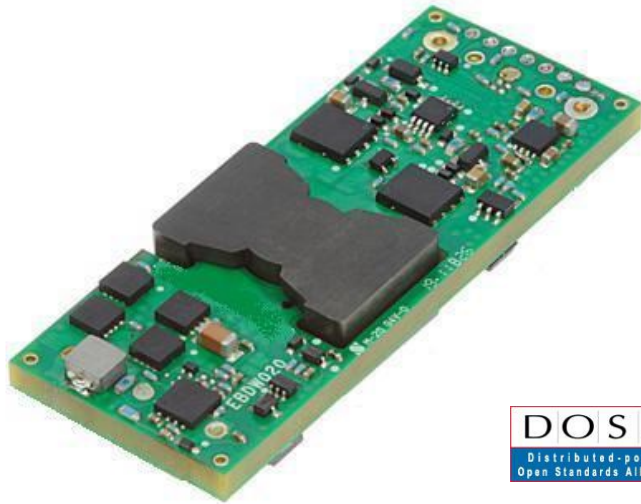


DATASHEET

EBDW020A0B Barracuda* Series; DC-DC Converter Power Modules

36-75V_{dc} Input; 12.0V_{dc}, 20.0A, 240W Output



Description

The EBDW020A0B Barracuda™ series of dc-dc converters are a new generation of DC/DC power modules designed to support 9.6-12V_{dc} intermediate bus applications where multiple low voltages are subsequently generated using point of load (POL) converters, as well as other application requiring a tightly regulated output voltage. The EBDW020A0B series operate from an input voltage range of 36 to 75V_{dc}, and provide up to 25A output current at output voltages from 5.0V_{dc} to 12.0V_{dc}, and 300W output power from output voltages of 12.1V_{dc}

to 13.2V_{dc} in a DOSA standard eighth brick. The converter incorporates digital control, synchronous rectification technology, a fully regulated control topology, and innovative packaging techniques to achieve efficiency exceeding 95.4% peak at 12V_{dc} output. This leads to lower power dissipations such that for many applications a heat sink is not required. Standard features include output voltage trim, remote sense, on/off control, output overcurrent and over voltage protection, over temperature protection, input under and over voltage lockout, power good signal and PMBus interface.

The output is fully isolated from the input, allowing versatile polarity configurations and grounding connections. Built-in filtering for both input and output minimizes the need for external filtering.

Applications

- Distributed power architectures
- Intermediate bus voltage applications
- Servers and storage applications
- Networking equipment including Power over Ethernet (PoE)
- Fan assemblies other systems requiring a tightly regulated output voltage

Options

- Negative Remote On/Off logic (1=option code, factory preferred)
- Auto-restart after fault shutdown (4=option code, factory preferred)
- Base plate option (-H=option code)
- Passive Droop Load Sharing (-P=option code)
- Surface Mount Pins (SMT, -S=option code)

See footnotes on page 2

Page 1

© 2023 OmniOn Power Inc. All rights reserved.

EBDW020A0B_DS

Rev. 1.7

Features

- Compliant to RoHS II EU Directive 2011/65/EU and amended Directive (EU) 2015/863 (-Z versions)
- Compliant to REACH Directive (EC) No 1907/2006
- Compatible with reflow pin/paste soldering process
- High and flat efficiency profile >95.4% at 12V_{dc}, 55% to 90% rated output
- Wide input voltage range: 36-75V_{dc}
- Delivers up to 20A_{dc} output current
- Remote sense and output voltage trim
- Fully very tightly regulated output voltage
- Output voltage adjust (via PMBus): 5.0V_{dc} to 13.2V_{dc}
- Low output ripple and noise
- No reverse current during prebias start-up or shut-down
- Industry standard, DOSA compliant Eighth brick:
- 58.4 mm x 22.8 mm x 11.3 mm (2.30 in x 0.90 in x 0.44 in)
- Constant switching frequency
- Positive remote On/Off logic
- Output over current/voltage protection
- Digital interface with PMBus™ Rev.1.2 compliance[^]
- Over temperature protection
- Wide operating temperature range (-40°C to 85°C)
- ANSI/UL* 62368-1 and CAN/CSA† C22.2 No. 62368-1 Recognized, DIN VDE‡ 0868-1/A11:2017 (EN62368- 1:2014/A11:2017)
- CE mark 2014/35/EC directives[§]
- Meets the voltage and current requirements for ETSI 300-132- 2 and complies with and licensed for Basic insulation
- 2250 V_{dc} Isolation tested in compliance with IEEE 802.3[¶] PoE standards
- ISO** 9001 and ISO14001 certified manufacturing facilities

FOOTNOTES

* Trademark of OmniOn Company

[^] PMBus name and logo are registered trademarks of SMIF, Inc.

UL is a registered trademark of Underwriters Laboratories, Inc.

† CSA is a registered trademark of Canadian Standards Association.

‡ VDE is a trademark of Verband Deutscher Elektrotechniker e.V.

§ This product is intended for integration into end-user equipment . All of the required procedures of end-use equipment should be followed.

¶ IEEE and 802 are registered trademarks of the Institute of Electrical and Electronics Engineers, Incorporated.

** ISO is a registered trademark of the International Organization of Standards.

Technical Specifications

Absolute Maximum Ratings

Stresses in excess of the absolute maximum ratings can cause permanent damage to the device. These are absolute stress ratings only, functional operation of the device is not implied at these or any other conditions in excess of those given in the operations sections of the data sheet. Exposure to absolute maximum ratings for extended periods can adversely affect the device reliability.

| Parameter | Device | Symbol | Min | Max | Unit |
|--|--------|-----------|------|------|--------------------|
| Input Voltage* | | | | | |
| Continuous | | V_{IN} | -0.3 | 75 | V_{dc} |
| Operating transient $\leq 100\text{ms}$ | | | | 100 | V_{dc} |
| Operating Input transient slew rate, $50V_{IN}$ to $75V_{IN}$ (Output may exceed regulation limits, no protective shutdowns shall activate, $C_O=220\mu\text{F}$ to $C_{O,max}$) | | - | - | 10 | $V/\mu\text{s}$ |
| Non-operating continuous | | V_{IN} | 80 | 100 | V_{dc} |
| Operating Ambient Temperature (See Thermal Considerations section) | All | T_A | -40 | 85 | $^{\circ}\text{C}$ |
| Logic Pin Voltage (to SIG_GND or $V_O(-)$) TRIM/C1, C2, ADDR0, ADDR1, CLK, DATA, SMBALERT | All | V_{pin} | -0.3 | 3.6 | V_{dc} |
| Storage Temperature | All | T_{stg} | -55 | 125 | $^{\circ}\text{C}$ |
| I/O Isolation Voltage (100% factory Hi-Pot tested) | All | - | - | 2250 | V_{dc} |

* Input over voltage protection will shutdown the output voltage when the input voltage exceeds threshold level.

Electrical Specifications

Unless otherwise indicated, specifications apply over all operating input voltage, resistive load, and temperature conditions.

| Parameter | Device | Symbol | Min | Typ | Max | Unit |
|---|--------|-------------------|-----|-----|-----|-------------------|
| Operating Input Voltage | | V_{IN} | 36 | 48 | 75 | V_{dc} |
| Maximum Input Current ($V_{IN}=0\text{V}$ to 75V , $I_O=I_{O,max}$) | | $I_{IN,max}$ | - | - | 7 | A_{dc} |
| Input No Load Current ($V_{IN} = V_{IN,nom}$, $I_O = 0$, module enabled) | All | $I_{IN,No\ load}$ | | 50 | | mA |
| Input Stand-by Current ($V_{IN} = V_{IN,nom}$, module disabled) | All | $I_{IN,stand-by}$ | | | 25 | mA |
| External Input Capacitance | All | C_{IN} | 100 | - | - | μF |
| Inrush Transient | All | I^2t | - | - | 1 | A^2_s |
| Input Terminal Ripple Current (Measured at module input pin with maximum specified input capacitance and $< 500\mu\text{H}$ inductance between voltage source and input capacitance $C_{IN}=220\mu\text{F}$, 5Hz to 20MHz, $V_{IN}= 48\text{V}$, $I_O= I_{Omax}$) | All | | - | 900 | - | mA_{rms} |
| Input Reflected Ripple Current, peak-to-peak (5Hz to 20MHz, $12\mu\text{H}$ source impedance; $V_{IN}= 48\text{V}$, $I_O= I_{Omax}$; see Figure 11) | All | | - | 24 | - | mA_{p-p} |

CAUTION: This power module is not internally fused. An input line fuse must always be used.

This power module can be used in a wide variety of applications, ranging from simple standalone operation to an integrated part of sophisticated power architecture. To preserve maximum flexibility, internal fusing is not included, however, to achieve maximum safety and system protection, always use an input line fuse. The safety agencies require a fast-acting fuse with a maximum rating of 15 A (see Safety Considerations section). Based on the information provided in this Data Sheet on inrush energy and maximum dc input current, the same type of fuse with a lower rating can be used. Refer to the fuse manufacturer's Data Sheet for further information.

Technical Specifications (continued)

Electrical Specifications (continued)

Unless otherwise indicated, specifications apply over all operating input voltage, resistive load, and temperature conditions.

| Parameter | Device | Symbol | Min | Typ | Max | Unit |
|---|-------------|-------------|------------------|-------|--------|---------------|
| Input Ripple Rejection (120Hz) | All | | - | 50 | - | dB |
| Output Voltage Set-point (Default) ($V_{IN}=V_{IN,nom}$, $I_O=12.5A$, $T_A=25^\circ C$) (Adjustable via PMBus) | All | $V_{O,set}$ | 11.97 | 12.00 | 12.03 | V_{dc} |
| Output Voltage Variation from Default (Over all operating input voltage (40V to 75V), resistive load, and temperature conditions until end of life) | All w/o -P | V_O | 11.76 | - | 12.24 | V_{dc} |
| | -P Option | V_O | 11.63 | - | 12.37 | V_{dc} |
| Output Voltage ($V_{IN}=36V$, $T_A = 25^\circ C$) | All | V_O | 10.8 | - | - | V_{dc} |
| Output Regulation [$V_{IN,min} = 40V$] Line ($V_{IN}=V_{IN,min}$ to $V_{IN,max}$) Load ($I_O=I_{O,min}$ to $I_{O,max}$) Line ($V_{IN}=V_{IN,min}$ to $V_{IN,max}$) Load ($I_O=I_{O,min}$ to $I_{O,max}$), Intentional Droop Temperature ($T_A = -40^\circ C$ to $+85^\circ C$) | All w/o -P | | - | 0.2 | - | % $V_{O,set}$ |
| | All w/o -P | | - | 0.2 | - | % $V_{O,set}$ |
| | -P Option | | - | 0.5 | - | % $V_{O,set}$ |
| | -P Option | | - | 0.50 | - | V_{dc} |
| | All | | - | 2 | - | % $V_{O,set}$ |
| Output Ripple and Noise on nominal output ($V_{IN}=V_{IN,nom}$ and $I_O=I_{O,min}$ to $I_{O,max}$) RMS (5Hz to 20MHz bandwidth) Peak-to-Peak (5Hz to 20MHz bandwidth) | All | | - | 70 | - | mV_{rms} |
| | All | | - | 200 | - | mV_{pk-pk} |
| External Output Capacitance | All w/o -02 | C_{OUT} | 220 | - | 10,000 | μF |
| | All w -02 | C_{OUT} | 220 ¹ | - | 10,000 | μF |
| Output Current | All | I_O | 0 | - | 25 | A_{dc} |
| VOUT_OC_FAULT_LIMIT (Default) (Adjustable via PMBus) | All w/o -02 | $I_{O,lim}$ | - | 23 | - | A_{dc} |
| | All w -02 | $I_{O,lim}$ | - | 28 | - | A_{dc} |
| Efficiency ($V_{IN}=V_{IN,nom}$, $V_O = V_{O,set}$, $T_A=25^\circ C$) $I_O=100\% I_{O,max}$ $I_O=55\% - 90\% I_{O,max}$ | All | η | - | 95.2 | - | % |
| | All | η | - | 95.4 | - | % |
| Switching Frequency (primary MOSFETs) (Output Ripple 2X switching frequency) | | f_{sw} | - | 150 | - | kHz |
| Dynamic Load Response $di_O/dt=1A/10\mu s$; $V_{in}=V_{in,nom}$; $T_A=25^\circ C$; (Tested with a $10\mu F$ ceramic and 1x $470\mu F$ polymer capacitor across the load.) Load Change from $I_O = 50\%$ to 75% of $I_{O,max}$: Peak Deviation Settling Time ($V_O < 10\%$ peak deviation) Load Change from $I_O = 75\%$ to 50% of $I_{O,max}$: Peak Deviation Settling Time ($V_O < 10\%$ peak deviation) ($di_O/dt=1A/10\mu s$; $V_{in}=V_{in,nom}$; $T_A=25^\circ C$; tested with a $10\mu F$ ceramic and 1 x $220\mu F$ polymer capacitor across the load.) Load Change from $I_O = 50\%$ to 75% of $I_{O,max}$: Peak Deviation Settling Time ($V_O < 10\%$ peak deviation) Load Change from $I_O = 75\%$ to 50% of $I_{O,max}$: Peak Deviation Settling Time ($V_O < 10\%$ peak deviation) | All w/o -02 | V_{pk} | - | 750 | - | mV_{pk} |
| | All w/o -02 | t_s | - | 800 | - | μs |
| | All w/o -02 | V_{pk} | - | 750 | - | mV_{pk} |
| | All w/o -02 | t_s | - | 800 | - | μs |
| | All w -02 | V_{pk} | - | 300 | - | mV_{pk} |
| | All w -02 | t_s | - | 700 | - | μs |
| | All w -02 | V_{pk} | - | 300 | - | mV_{pk} |
| | All w -02 | t_s | - | 700 | - | μs |

Note (1): Polymer capacitors required.

Technical Specifications (continued)

Isolation Specifications

| Parameter | Symbol | Min | Typ | Max | Unit |
|-----------------------|-----------|-----|------|-----|------|
| Isolation Capacitance | C_{iso} | - | 1000 | - | pF |
| Isolation Resistance | R_{iso} | 10 | - | - | MΩ |

Feature Specifications

Unless otherwise indicated, specifications apply over all operating input voltage, resistive load, and temperature conditions. See Feature Descriptions for additional information.

| Parameter | Device | Symbol | Min | Typ | Max | Unit |
|---|--|--|------------------|------------------|--------------------------|----------------------|
| Remote On/Off Signal Interface ($V_{IN}=V_{IN}$, min to $V_{IN,max}$, Signal referenced to V_{IN} - terminal) Negative Logic: device code suffix "1" Logic Low = module On, Logic High = module Off Positive Logic: No device code suffix required Logic Low = module Off, Logic High = module On | | | | | | |
| On/Off Thresholds: | | | | | | |
| Remote On/Off Current – Logic Low ($V_{in}=100V$) | All | $I_{on/off}$ | 280 | - | 310 | μA |
| Logic Low Voltage | All | $V_{on/off}$ | -0.3 | - | 0.8 | V_{dc} |
| Logic High Voltage – (Typ = Open Collector) | All | $V_{on/off}$ | 2.0 | - | 14.5 | V_{dc} |
| Logic High maximum allowable leakage current ($V_{on/off}=2.0V$) | All | $I_{on/off}$ | - | - | 10 | μA |
| Maximum voltage allowed on On/Off pin | All | $V_{on/off}$ | - | - | 14.5 | V_{dc} |
| TON_DELAY and TON_RISE ($I_o=I_{o,max}$) (Adjustable via PMBus) T_{delay} =Time until $V_o=10\%$ of $V_{o,set}$ from either application of V_{in} with Remote On/Off set to On (Enable with V_{in}); or operation of Remote On/Off from Off to On with V_{in} already applied for at least 150 milli-seconds (Enable with on/off). * Increased T_{delay} due to startup for parallel modules. | All w/o -P All w/o -P w/ -P w/ -P | $T_{delay, Enable with Vin}$ $T_{delay, Enable with on/off}$ $T_{delay, Enable with Vin}$ $T_{delay, Enable with on/off}$ | - - - - | - - - - | 160 40 180* 40* | ms ms ms ms |
| T_{rise} =Time for V_o to rise from 10% to 90% of $V_{o,set}$, For $C_o > 5000\mu F$, I_o must be $< 50\% I_{o,max}$ during T_{rise} . * Increased T_{rise} when V_o exists at startup for parallel modules. | All w/o -P w/ -P | T_{rise} T_{rise} | - - | - - | 40 300* | ms ms |
| Load Sharing Current Balance (difference in output current across all modules with outputs in parallel, no load to full load) | -P Option | I_{diff} | - | | 3 | A |
| Remote Sense Range | All | V_{sense} | - | - | 0.5 | V_{dc} |
| External Resistor Trim Range | All | $V_{o,set}$ | 6.0 | | 13.2 | V_{dc} |
| VOUT_COMMAND (Adjustable via PMBus) | All | $V_{o,set}$ | 5.0 | | 13.2 | V_{dc} |
| VOUT_OV_FAULT_LIMIT (Adjustable via PMBus) | All | $V_{o,limit}$ | | 15 | | V_{dc} |
| OT_FAULT_LIMIT (Adjustable via PMBus) | All | T_{ref} | - | 140 | - | °C |
| Input Undervoltage Lockout (Adjustable via PMBus) VIN_ON VIN_OFF | | | 34 32 | 35 33.5 | 36 34.5 | V_{dc} V_{dc} |
| Input Overvoltage Lockout (Adjustable via PMBus) Turn-off Threshold [VIN_OV_FAULT_LIMIT] | | | - | 85 | - | V_{dc} |
| Turn-on Threshold (follows VIN_OV_FAULT_LIMIT -7V) | | | - | 79 | - | V_{dc} |
| Pull down resistance of Power Good pin Sink current capability into Power Good pin ($V_{PG}=2.2V$) | All All | | | | 150 15 | Ω mA |

Technical Specifications (continued)

General Specifications

| Parameter | Device | Symbol | Typ | Unit |
|---|--------|--------|-------------|---------------|
| Calculated Reliability based upon Telcordia SR-332 ($I_o=80\%I_{o,max}$, $T_A=40^{\circ}C$, Airflow = 200 LFM), 90% confidence) | All | MTBF | 4,169,213 | Hours |
| | All | FIT | 239.9 | 10^9 /Hours |
| Weight – Open Frame | | | 30.0 (1.06) | g (oz.) |
| Weight – with Base plate option | | | 39.5 (1.39) | g (oz.) |

Digital Interface Specifications

Unless otherwise indicated, specifications apply over all operating input voltage, resistive load, and temperature conditions. See Feature Descriptions for additional information.

| Parameter | Conditions | Symbol | Min | Typ | Max | Unit |
|--|------------------------|----------------|------|-------|---------|-------------|
| PMBus Signal Interface Characteristics | | | | | | |
| Input High Voltage (CLK, DATA) | | V_{IH} | 2.1 | | 3.6 | V |
| Input Low Voltage (CLK, DATA) | | V_{IL} | | | 0.8 | V |
| Input high level current (CLK, DATA) | | I_{IH} | -10 | | 10 | μA |
| Input low level current (CLK, DATA) | | I_{IL} | -10 | | 10 | μA |
| Output Low Voltage (CLK, DATA, SMBALERT#) | $I_{OUT}=2mA$ | V_{OL} | | | 0.4 | V |
| Output high level internal leakage current (DATA, SMBALERT#) | $V_{OUT}=3.6V$ | I_{OH} | 0 | | 10 | μA |
| Pin capacitance | | C_O | | 0.7 | | pF |
| PMBus Operating frequency range (* 5-10 kHz to accommodate hosts not supporting clock stretching) | Slave Mode | F_{PMB} | 5* | | 400 | kHz |
| Measurement System Characteristics | | | | | | |
| Output current reading range | | $I_{OUT(RNG)}$ | 0.56 | | 63.9375 | A |
| Output current reading resolution | | $I_{OUT(RES)}$ | | 0.19 | | A |
| Output current reading accuracy | $5A < I_{out} < 25A$ | $I_{OUT(ACC)}$ | -5.0 | | 4.0 | % |
| Output current reading accuracy (absolute difference between actual and reported values) | $0.56A < I_{out} < 5A$ | $I_{OUT(ACC)}$ | -1.4 | | 2.7 | A |
| V_{OUT} reading range | | $V_{OUT(RNG)}$ | 0 | | 15.9997 | V |
| V_{OUT} reading resolution | | $V_{OUT(RES)}$ | | 0.244 | | mV |
| V_{OUT} reading accuracy | | $V_{OUT(ACC)}$ | -2.0 | 0.6 | 2.0 | % |
| V_{IN} reading range | | $V_{IN(RNG)}$ | 0 | | 127.875 | V |
| V_{IN} reading resolution | | $V_{IN(RES)}$ | | 125 | | mV |
| V_{IN} reading accuracy | | $V_{IN(ACC)}$ | -4.0 | 0.8 | 4.0 | % |
| Temperature reading resolution | | $T_{(RES)}$ | | 0.25 | | $^{\circ}C$ |
| Temperature reading accuracy | | $T_{(ACC)}$ | -5.0 | | 5.0 | % |

Technical Specifications (continued)

Characteristic Curves

The following figures provide typical characteristics for the EBDW020A0B (12V, 25A) at 25°C. The figures are identical for either positive or negative Remote On/Off logic.

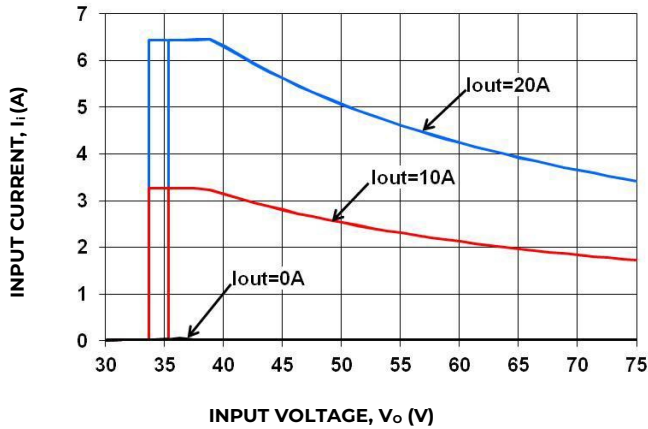


Figure 1. Typical Input Characteristic at Room Temperature.

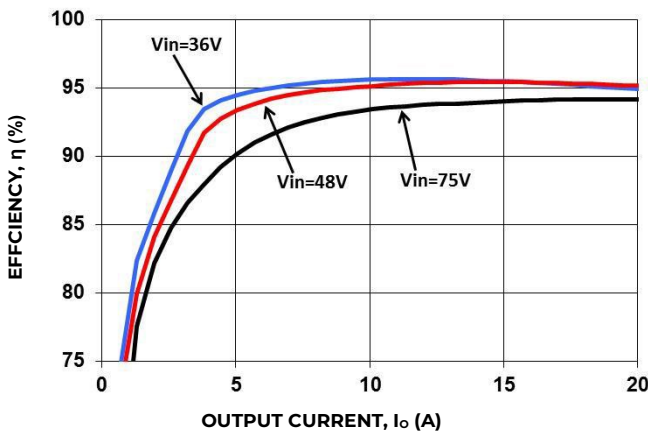


Figure 2. Typical Converter Efficiency Vs. Output current at Room Temperature.

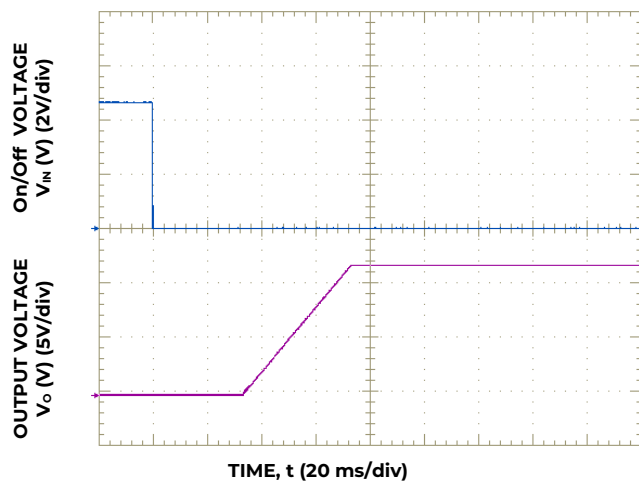


Figure 3. Typical Start-Up Using Remote On/Off with Vin applied, negative logic version shown.

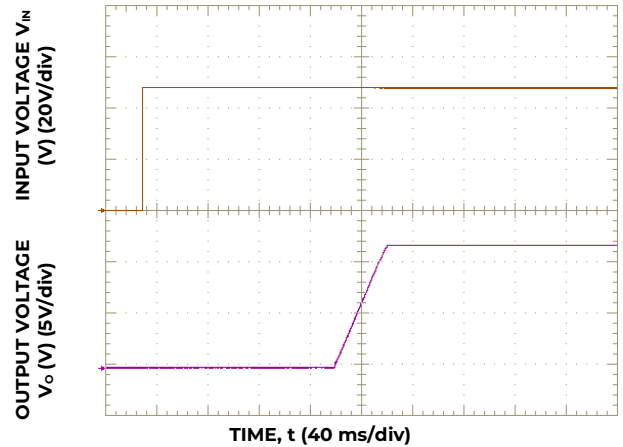


Figure 4. Typical Start-Up Using Vin with Remote On/Off enabled, negative logic version shown.

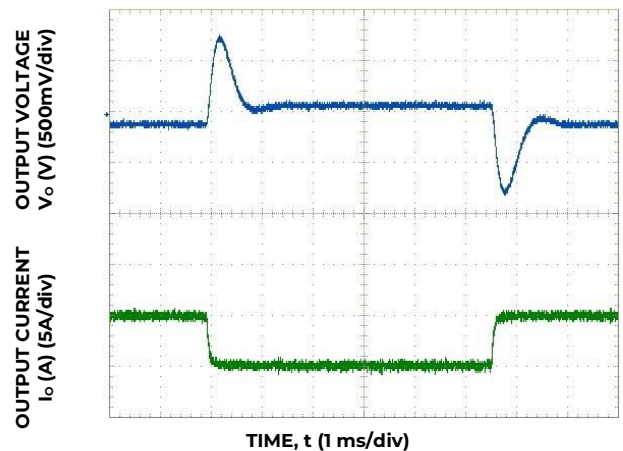


Figure 5. Typical Transient Response to Step Change in Load from 25% to 50% to 25% of Full Load at 48Vdc Input and CO= 470uF Polymer, without -02 option.

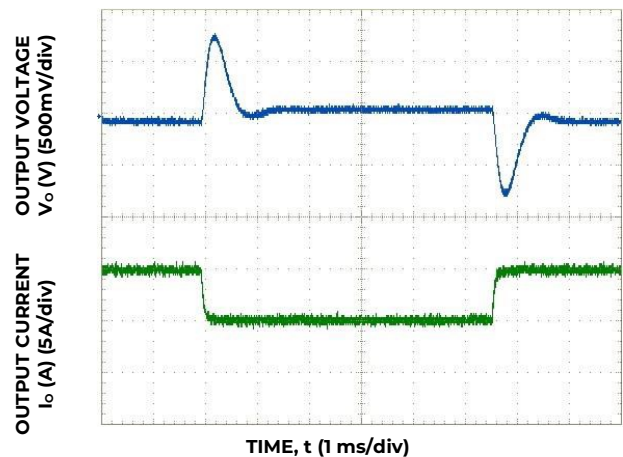


Figure 6. Typical Transient Response to Step Change in Load from 50% to 75% to 50% of Full Load at 48Vdc Input and CO= 470uF Polymer, without -02 option.

Technical Specifications (continued)

Characteristic Curves (continued)

The following figures provide typical characteristics for the EBDW020A0B (12V, 25A) at 25°C. The figures are identical for either positive or negative Remote On/Off logic.

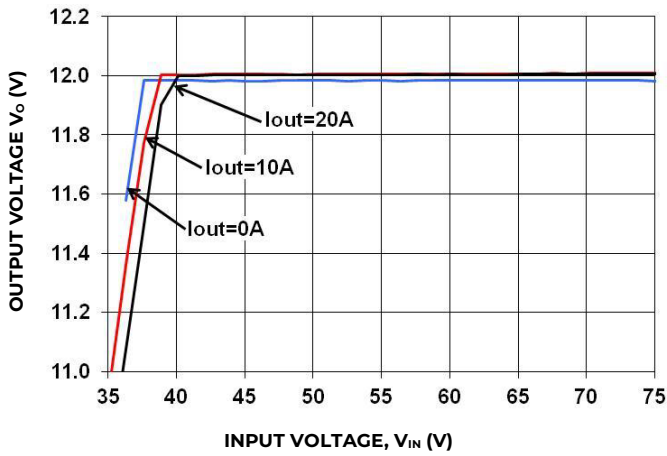


Figure 7. Typical Output Voltage Regulation vs. Input Voltage at Room Temperature.

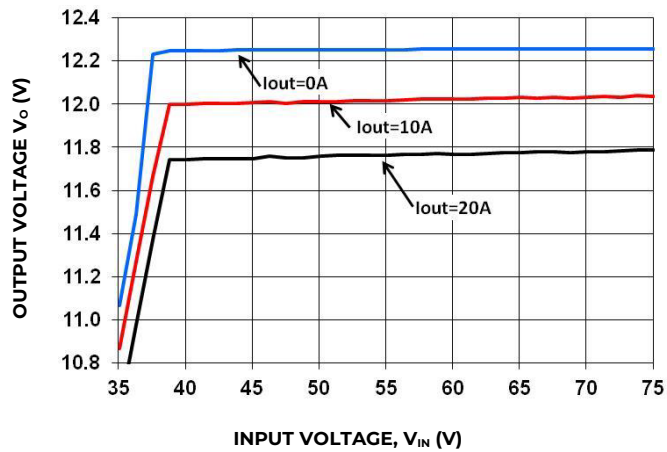


Figure 8. Typical Output Voltage Regulation vs. Input Voltage for the -P Version at Room Temperature.

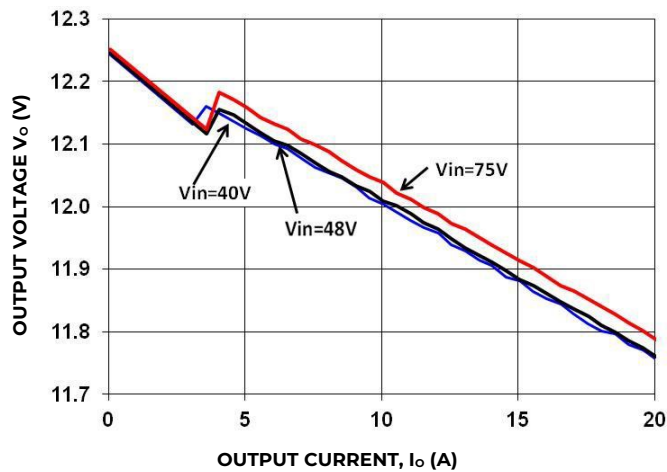


Figure 9. Typical Output Voltage Regulation vs. Output Current for the -P Version at Room Temperature.

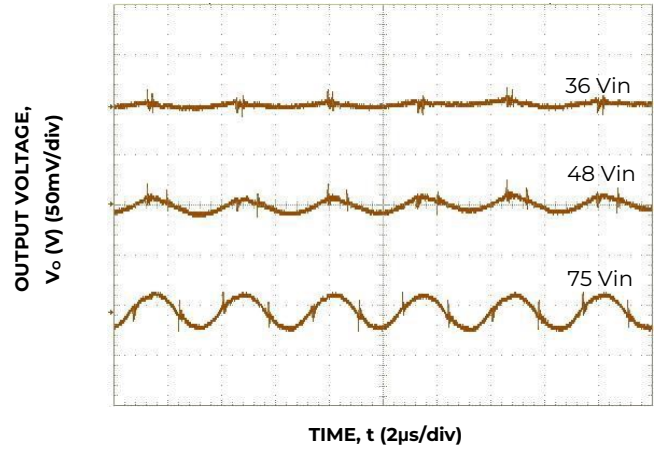


Figure 10. Typical Output Ripple and Noise at Room Temperature $I_o = I_{o,max}$ and C_{Omin} .

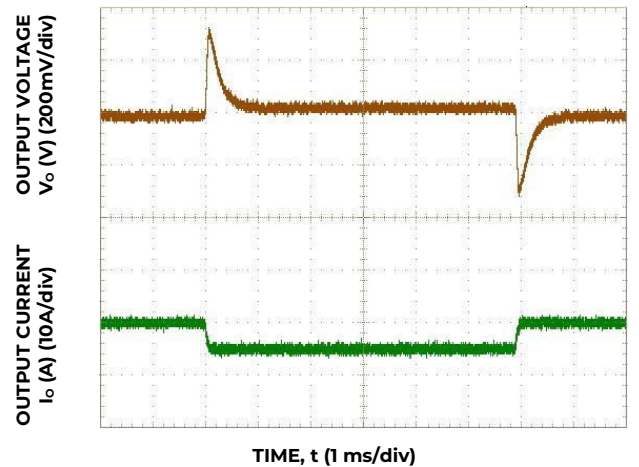


Figure 11. Typical Transient Response to Step Change in Load from 25% to 50% to 25% of Full Load at 48Vdc Input and $C_O = 220\mu F$ Polymer, with -02 option.

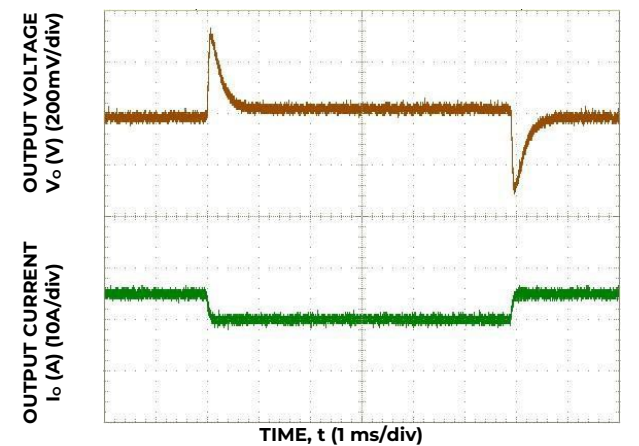


Figure 12. Typical Transient Response to Step Change in Load from 50% to 75% to 50% of Full Load at 48Vdc Input and $C_O = 220\mu F$ Polymer, with -02 option.

Technical Specifications (continued)

Test Configurations

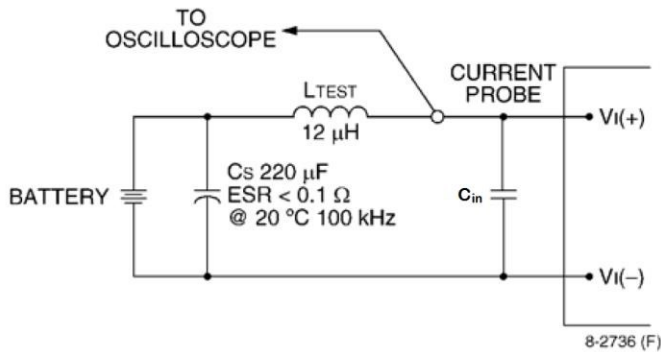


Figure 13. Input Reflected Ripple Current Test Setup.

Note: Measure input reflected-ripple current with a simulated source inductance (LTEST) of 12 μH. Capacitor CS offsets possible battery impedance. Measure current as shown above.

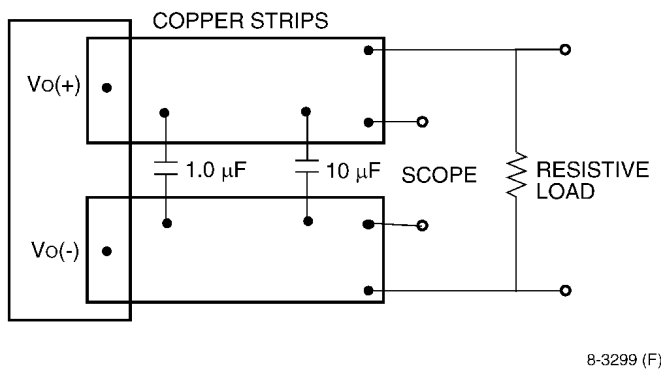


Figure 14. Output Ripple and Noise Test Setup.

Note: Use a 1.0 μF ceramic capacitor and a 10 μF aluminum or tantalum capacitor. Scope measurement should be made using a BNC socket. Position the load between 51 mm and 76 mm (2 in. and 3 in.) from the module.

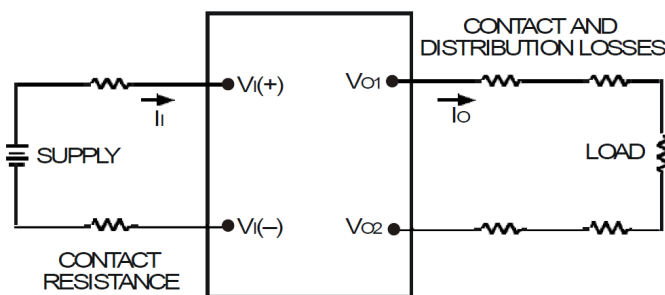


Figure 15. Output Voltage and Efficiency Test Setup.

Note: All measurements are taken at the module terminals. When socketing, place Kelvin connections at module terminals to avoid measurement errors due to socket contact resistance.

$$\eta = \left(\frac{[V_o(+)-V_o(-)]I_o}{[V_i(+)-V_i(-)]I_i} \right) \times 100\%$$

Design Considerations

Input Source Impedance

The power module should be connected to a low ac-impedance source. A highly inductive source impedance can affect the stability of the power module. For the test configuration in Figure 13, a 100μF electrolytic capacitor, Cin, (ESR<0.7Ω at 100kHz), mounted close to the power module helps ensure the stability of the unit. If the module is subjected to rapid on/off cycles, a 330μF input capacitor is required. Consult the factory for further application guidelines.

Safety Considerations

For safety agency approval the power module must be installed in compliance with the spacing and separation requirements of the end-use safety agency standards, i.e., UL ANSI/UL 62368-1 and CAN/CSA C22.2 No. 62368-1 Recognized, DIN VDE 0868-1/A11:2017 (EN62368-1:2014/A11:2017)

If the input source is non-SELV (ELV or a hazardous voltage greater than 60 Vdc and less than or equal to 75Vdc), for the module's output to be considered as meeting the requirements for safety extra-low voltage (SELV) or ES1, all of the following must be true:

- The input source is to be provided with reinforced insulation from any other hazardous voltages, including the ac mains.
- One VIN pin and one VOUT pin are to be grounded, or both the input and output pins are to be kept floating.
- The input pins of the module are not operator accessible.
- Another SELV or ES1 reliability test is conducted on the whole system (combination of supply source and subject module), as required by the safety agencies, to verify that under a single fault, hazardous voltages do not appear at the module's output.

Note: Do not ground either of the input pins of the module without grounding one of the output pins. This may allow a non-SELV/ES1 voltage to appear between the output pins and ground.

Technical Specifications (continued)

The power module has safety extra-low voltage (SELV) or ESI outputs when all inputs are SELV or ESI.

The input to these units is to be provided with a maximum 15 A fast-acting (or time-delay) fuse in the unearthed lead.

The power module has internally generated voltages exceeding safety extra-low voltage. Consideration should be taken to restrict operator accessibility.

Feature Descriptions

Overcurrent Protection

To provide protection in a fault output overload condition, the EBDW020A0B module is equipped with internal current-limiting circuitry and can endure current limiting continuously. If the overcurrent condition causes the output voltage to fall below 4.0V, the module will shut down. The module is factory default configured for auto-restart operation. The auto-restart feature continually attempts to restore the operation until fault condition is cleared. If the output overload condition still exists when the module restarts, it will shut down again. This operation will continue indefinitely until the overcurrent condition is corrected.

The IOUT_OC_WARN threshold level, IOUT_OC_FAULT threshold level, and IOUT_OC_FAULT_RESPONSE can be reconfigured via the PMBus interface. If the FAULT_RESPONSE is reconfigured to remain latched off following an overcurrent shutdown, the overcurrent latch is reset by either cycling the input power, or by toggling the on/off pin for one millisecond.

Output Overvoltage Protection

The module contains circuitry to detect and respond to output overvoltage conditions. If the overvoltage condition causes the output voltage to rise above the limit in the Specifications Table, the module will shut down. The EBDW020A0B module is factory default configured for auto-restart operation. The auto-restart feature continually attempts to restore the operation until fault condition is cleared. If the output overvoltage condition still exists when the module restarts, it will shut down again. This operation will continue indefinitely until the overvoltage condition is corrected.

The VOUT_OV_FAULT threshold level and VOUT_OV_FAULT_RESPONSE can be reconfigured via

the PMBus interface. If the FAULT_RESPONSE is reconfigured to remain latched off following an overvoltage shutdown, the overvoltage latch is reset by either cycling the input power, or by toggling the on/off pin for one millisecond.

Overtemperature Protection

The modules feature an overtemperature protection circuit to safeguard against thermal damage. The circuit shuts down the module when the default maximum device reference temperature is exceeded. The module is factory default configured to automatically restart once the reference temperature cools by ~25°C.

The OT_WARNING and OT_FAULT threshold levels and OT_FAULT_RESPONSE can be reconfigured via the PMBus interface. If the FAULT_RESPONSE is reconfigured to remain latched off following an overtemperature shutdown, the overtemperature latch is reset by either cycling the input power or by toggling the on/off pin for one millisecond.

Input Under Voltage Lockout

When V_{in} exceeds V_{IN_ON} , the module output is enabled, when V_{in} falls below V_{IN_OFF} , the module output is disabled. V_{IN_ON} and V_{IN_OFF} can be reconfigured via the PMBus interface. A minimum 2V hysteresis between V_{IN_ON} and V_{IN_OFF} is required.

Input Over Voltage Lockout

The EBDW020A0B module contains circuitry to detect and respond to input overvoltage conditions. If the overvoltage condition causes the input voltage to rise above the limit in the Specifications Table, the module will shut down. The module is factory default configured for auto-restart operation. The auto-restart feature continually monitors the input voltage and will restart the module when the level falls 7V below the $V_{IN_OV_FAULT}$ level.

The $V_{IN_OV_FAULT}$ threshold level can be reconfigured via the PMBus interface.

Remote On/Off (i)

The module contains a standard on/off control circuit reference to the $V_{IN}(-)$ terminal. Two factory configured remote on/off logic options are available. Positive logic remote on/off turns the module on during a logic-high voltage on the ON/OFF pin, and off during a logic LO. Negative logic remote on/off turns the module off during a logic HI, and on during a logic LO. Negative logic, device code suffix "I," is the factory-preferred configuration. The On/Off circuit is powered from an internal bias supply, derived from the input voltage terminals. To turn the power module on and off, the user must supply a switch to control the

Technical Specifications (continued)

Feature Descriptions (continued)

voltage between the On/Off terminal and the $V_{IN(-)}$ terminal ($V_{on/off}$). The switch can be an open collector or equivalent (see Figure 16). A logic LO is $V_{on/off} = -0.3V$ to $0.8V$. The typical $I_{on/off}$ during a logic LO ($V_{in}=48V$, On/Off Terminal= $0.3V$) is $147\mu A$. The switch should maintain a logic-low voltage while sinking $310\mu A$. During a logic HI, the maximum $V_{on/off}$ generated by the power module is $8.2V$. The maximum allowable leakage current of the switch at $V_{on/off} = 2.0V$ is $10\mu A$. If using an external voltage source, the maximum voltage $V_{on/off}$ on the pin is $14.5V$ with respect to the $V_{IN(-)}$ terminal.

If not using the remote on/off feature, perform one of the following to turn the unit on:

For negative logic, short ON/OFF pin to $V_{IN(-)}$.

For positive logic: leave ON/OFF pin open.

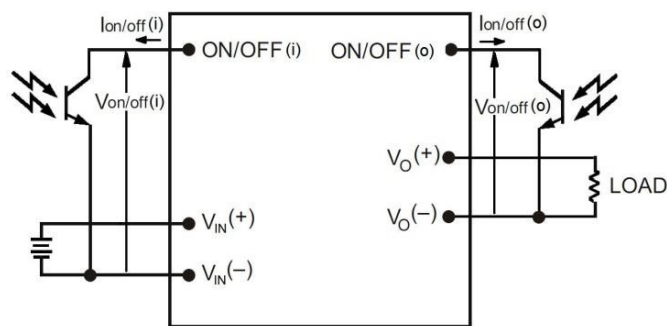


Figure 16. Remote On/Off Implementation.

Load Sharing

For higher power requirements, the EBDW020A0 power module offers an optional feature for parallel operation (-P Option code). This feature provides a precise forced output voltage load regulation droop characteristic. The output set point and droop slope are factory calibrated to insure optimum matching of multiple modules' load regulation characteristics. To implement load sharing, the following requirements should be followed:

- The $V_{OUT}(+)$ and $V_{OUT}(-)$ pins of all parallel modules must be connected together. Balance the trace resistance for each module's path to the output power planes, to insure best load sharing and operating temperature balance.
- V_{IN} must remain between $40V_{dc}$ and $75V_{dc}$ for droop sharing to be functional.
- It is permissible to use a common Remote On/Off signal to start all modules in parallel.

- These modules contain means to block reverse current flow upon start-up, when output voltage is present from other parallel modules, thus eliminating the requirement for external output ORing devices. Modules with the -P option will self determine the presence of voltage on the output from other operating modules, and automatically increase its Turn On delay, T_{delay} , as specified in the Feature Specifications Table.
- When parallel modules startup into a pre-biased output, e.g. partially discharged output capacitance, the T_{rise} is automatically increased, as specified in the Feature Specifications Table, to insure graceful startup.
- Insure that the load is $<50\% I_{O,MAX}$ (for a single module) until all parallel modules have started (load full start $>$ module T_{delay} time max + T_{rise} time).
- If fault tolerance is desired in parallel applications, output ORing devices should be used to prevent a single module failure from collapsing the load bus.

Remote Sense

Remote sense minimizes the effects of distribution losses by regulating the voltage at the remote-sense connections (See Figure 17). The SENSE(-) pin should be always connected to $V_O(-)$. The voltage between the remote-sense pins and the output terminals must not exceed the output voltage sense range given in the Feature Specifications table:

$$[V_O(+) - V_O(-)] - [SENSE(+)] \leq 0.5 V$$

Although the output voltage can be increased by both the remote sense and by the trim, the maximum increase for the output voltage is not the sum of both. The maximum increase is the larger of either the remote sense or the trim. The amount of power delivered by the module is defined as the voltage at the output terminals multiplied by the output current. When using remote sense and trim, the output voltage of the module can be increased, which at the same output current, would increase the power output of the module. Care should be taken to ensure that the maximum output power of the module remains at or below the maximum rated power (Maximum rated power = $V_{o,set} \times I_{o,max}$).

Technical Specifications (continued)

Feature Descriptions (continued)

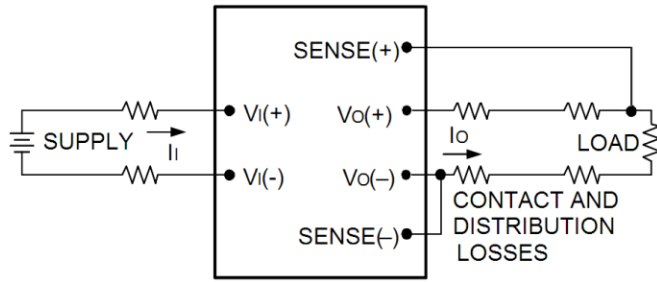


Figure 17. Circuit Configuration for remote sense.

Remote On/Off (o)

The module contains an additional remote on/off control input On/Off(o), via either the T/C1 or C2 pin, reference to the SIG_GND pin. The factory default configuration is set to ignore this input, unless activated by the PMBus command, MFR_CPIN_ON_OFF_CONFIG. This command is also used to configure the logic for the On/Off(o) pin. Positive logic remote on/off turns the module on during a logic HI voltage on the ON/OFF pin, and off during a logic LO. Negative logic remote on/off turns the module off during a logic HI, and on during a logic LO. The On/Off(o) circuit is powered from an internal bias supply, referenced to SIG_GND. To turn the power module on and off, the user must supply a switch to control the voltage between the On/Off (o) terminal and the SIG_GND pin ($V_{on/off}(o)$). The switch can be an open collector or equivalent (see Figure 14). A logic LO is $V_{on/off}(o) = -0.3V$ to $0.8V$. The typical $I_{on/off}(o)$ during a logic low is $330\mu A$. The switch should maintain a logic LO voltage while sinking $250\mu A$. During a logic HI, the maximum $V_{on/off}(o)$ generated by the power module is $3.3V$. The maximum allowable leakage current of the switch at $V_{on/off}(o) = 2.0V$ is $130\mu A$. If using an external voltage source, the maximum voltage $V_{on/off}$ on the pin is $3.3V$ with respect to the $V_i(-)$ terminal.

If not using the Remote On/Off(o) feature, the pin may be left N/C.

Power Good, PG

The EBDW020A0B module provides a Power Good (PG) feature, which compares the module's output voltage to the module's POWER_GOOD_ON and POWER_GOOD_OFF values. These values are adjustable via PMBus. PG is asserted when the module's output voltage is above the POWER_GOOD_ON value, and PG is de-asserted if any condition such as overtemperature, overcurrent or

loss of regulation occurs that would result in the output voltage going below the POWER_GOOD_OFF value.

The PG signal, provided on pin C2, is implemented with an open-drain node, pulled up via a $10k\Omega$ resistor to $3.3V$ internally. For Positive Logic PG (default), the PG signal is HI, when PG is asserted, and LO, when the PG is de-asserted. For Negative Logic PG, the PG signal is LO, when PG is asserted, and HI, when the

PG is de-asserted.

The PMBus command MFR_PGOOD_POLARITY is used to set the logic polarity of the signal.

If not using the Power Good feature, the pin may be left N/C.

Trim, Output Voltage Programming

Trimming allows the output voltage set point to be increased or decreased; this is accomplished by connecting an external resistor between the TRIM pin and either the $V_o(+)$ pin or the $V_o(-)$ pin.

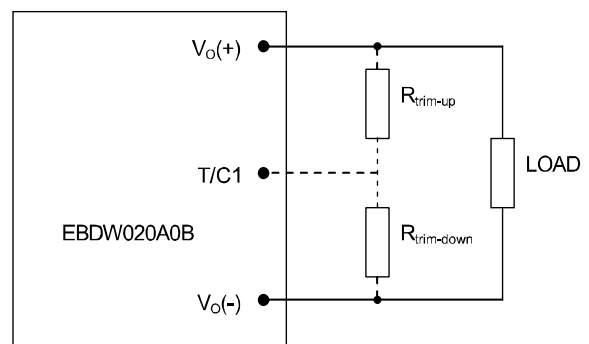


Figure 18. Circuit Configuration to Trim Output Voltage.

Connecting an external resistor ($R_{trim-down}$) between the T/C1 pin and the $V_o(-)$ (or Sense(-)) pin decreases the output voltage set point. To maintain set point accuracy, the trim resistor tolerance should be $\pm 1.0\%$.

The following equation determines the required external resistor value to obtain a percentage output voltage change of $\Delta\%$.

$$R_{trim-down} = \left[\frac{511}{\Delta\%} - 10.22 \right] \text{ k}\Omega$$

Where

$$\Delta\% = \left(\frac{12.0V - V_{desired}}{12.0V} \right) \times 100$$

Technical Specifications (continued)

Thermal Considerations (continued)

Heat-dissipating components are mounted on the top side of the module. Heat is removed by conduction, convection and radiation to the surrounding environment. Proper cooling can be verified by measuring the thermal reference temperature (TH1 or TH2). Peak temperature occurs at the position indicated in Figure 19 and 20. For reliable operation this temperature should not exceed TH1=125°C or TH2=105°C. For extremely high reliability you can limit this temperature to a lower value.

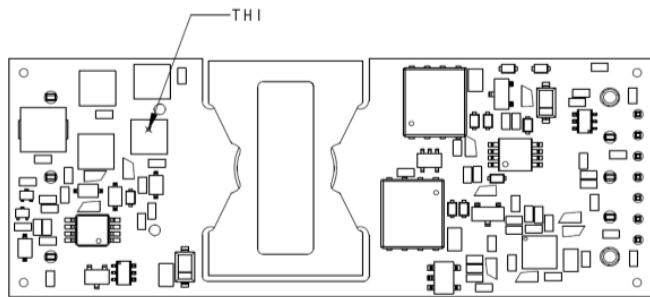


Figure 19. Location of the thermal reference temperature TH.
Do not exceed 113°C.

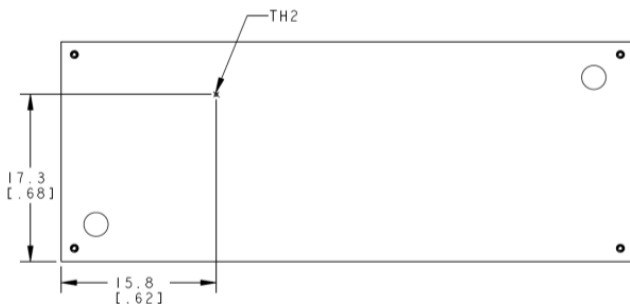


Figure 20. Location of the thermal reference temperature TH3 for Base Plate module. Do not exceed 110°C.

The output power of the module should not exceed the rated power for the module as listed in the Ordering Information table.

Please refer to the Application Note “Thermal Characterization Process For Open-Frame Board-Mounted Power Modules” for a detailed discussion of thermal aspects including maximum device temperatures.

Heat Transfer via Convection

Increased airflow over the module enhances the heat transfer via convection. The thermal derating of figure 21-23 shows the maximum output current that can be delivered by each module in the indicated orientation without exceeding the maximum TH_x temperature

versus local ambient temperature (T_A) for several air flow conditions.

The use of Figure 21 is shown in the following example:

Example

What is the minimum airflow necessary for a EBDW020A0B operating at V_i = 48 V, an output current of 15A, and a maximum ambient temperature of 60°C in transverse orientation.

Solution:

Velocity = 0.5m/s (100 LFM) or greater.

Given: V_{in} = 48V, I_O = 14A, T_A = 60°C

Determine required airflow velocity (Use Figure 21):

Velocity = 0.5m/s (100 LFM) or greater.

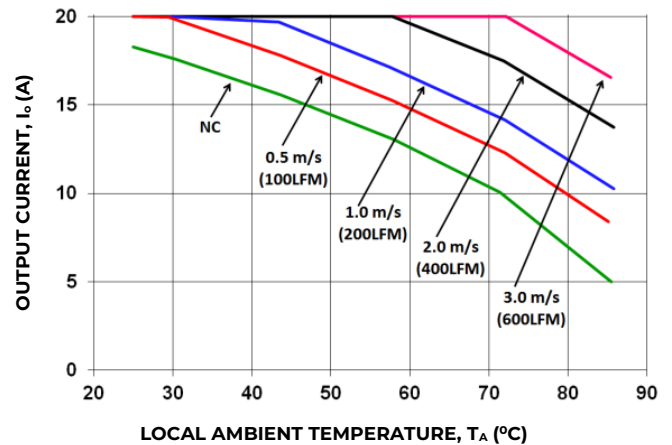


Figure 21. Output Current Derating for the Open Frame EBDW020A0B in the Transverse Orientation; Airflow Direction from Vin(-) to Vin(+); Vin = 48V.

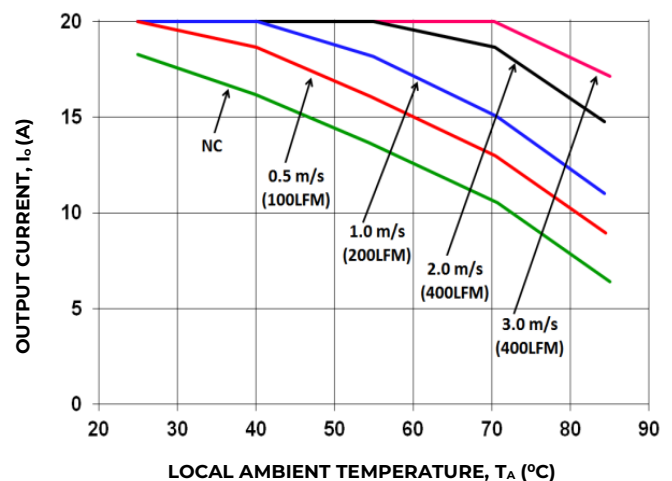


Figure 22. Output Current Derating for the Base Plate EBDW020A0Bxx-H in the Transverse Orientation; Airflow Direction from Vin(-) to Vin(+); Vin = 48V.

Technical Specifications (continued)

Thermal Considerations (continued)

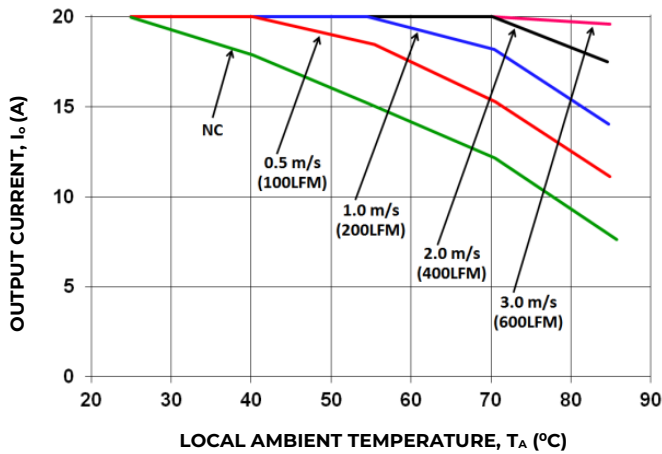


Figure 23. Output Current Derating for the Base Plate EBDW020A0Bxx-H and 0.25" heat sink in the Transverse Orientation; Airflow Direction from Vin(-) to Vin(+); Vin = 48V.

Layout Considerations

The EBDW020A0B power module series are low profile in order to be used in fine pitch system card architectures. As such, component clearance between the bottom of the power module and the mounting board is limited. Avoid placing copper areas on the outer layer directly underneath the power module. Also avoid placing via interconnects underneath the power module.

For additional layout guide-lines, refer to FLT007A0Z Data Sheet.

Through-Hole Lead-Free Soldering Information

The RoHS-compliant, Z version, through-hole products use the SAC (Sn/Ag/Cu) Pb-free solder and RoHS-compliant components. The non-Z version products use lead-tin (Pb/Sn) solder and RoHS-compliant components. Both version modules are designed to be processed through single or dual wave soldering machines. The pins have an RoHS-compliant, pure tin finish that is compatible with both Pb and Pb-free wave soldering processes. A maximum preheat rate of 3°C/s is suggested. The wave preheat process should be such that the temperature of the power module board is kept below 210°C. For Pb solder, the recommended pot temperature is 260°C, while the Pb-free solder pot is 270°C max. Not all RoHS-compliant through-hole products can be processed with paste-through-hole Pb or Pb-free reflow process. If additional information is needed, please consult with your OmniOn representative for more details.

Reflow Lead-Free Soldering Information

The RoHS-compliant through-hole products can be processed with the following paste-through-hole Pb or Pb-free reflow process.

Max. sustain temperature :

245°C (J-STD-020C Table 4-2: Packaging Thickness $\geq 2.5\text{mm}$ / Volume $> 2000\text{mm}^3$),

Peak temperature over 245°C is not suggested due to the potential reliability risk of components under continuous high temperature.

Min. sustain duration above 217°C : 90 seconds

Min. sustain duration above 180°C : 150 seconds

Max. heat up rate: 3°C/sec

Max. cool down rate: 4°C/sec

In compliance with JEDEC J-STD-020C spec for 2 times reflow requirement.

Pb-free Reflow Profile

BMP module will comply with J-STD-020 Rev. C (Moisture/Reflow Sensitivity Classification for Nonhermetic Solid State Surface Mount Devices) for both Pb-free solder profiles and MSL classification procedures. BMP will comply with JEDEC J-STD-020 specification for 3 times reflow requirement. The suggested Pb-free solder paste is Sn/Ag/Cu (SAC). The recommended linear reflow profile using Sn/Ag/Cu solder is shown in Figure 24.

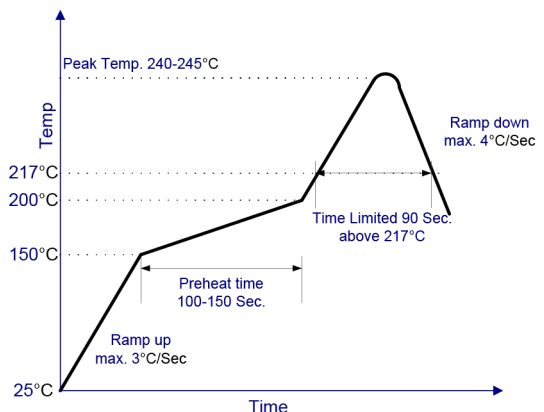


Figure 24. Recommended linear reflow profile using Sn/Ag/Cu solder.

Technical Specifications (continued)

Surface Mount Information

Storage and Handling

The recommended storage environment and handling procedures for moisture-sensitive surface mount packages is detailed in J-STD-033 Rev. A (Handling, Packing, Shipping and Use of Moisture/Reflow Sensitive Surface Mount Devices). Moisture barrier bags (MBB) with desiccant are provided for the EBDW020A0Bxx-SZ modules. These sealed packages should not be broken until time of use. Once the original package is broken, the floor life of the product at conditions of $\leq 30^{\circ}\text{C}$ and 60% relative humidity varies according to the MSL rating (see J-STD-033A). The shelf life for dry packed SMT packages is a minimum of 12 months from the bag seal date, when stored at the following conditions: $< 40^{\circ}\text{C}$, $< 90\%$ relative humidity.

Pick and Place

The EBDW020A0B modules use an open frame construction and are designed for a fully automated assembly process. The modules are fitted with a label designed to provide a large surface area for pick and place operations. The label meets all the requirements for surface mount processing, as well as safety standards, and is able to withstand reflow temperatures of up to 300°C . The label also carries product information such as product code, serial number and the location of manufacture.

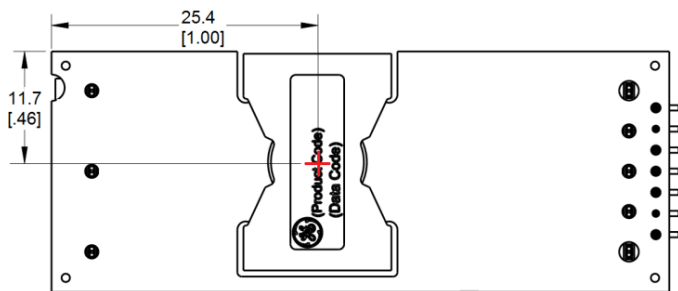


Figure 25. Pick and Place Location.

Nozzle Recommendations

The module weight has been kept to a minimum by using open frame construction. Even so, these modules have a relatively large mass when compared to conventional SMT components. Variables such as nozzle size, tip style, vacuum pressure and placement speed should be considered to optimize this process. The minimum recommended nozzle diameter for reliable operation is 6mm. The maximum nozzle outer diameter, which will safely fit within the allowable

component spacing, is 9 mm.

Oblong or oval nozzles up to 11×9 mm may also be used within the space available.

MSL Rating

The EBDW020A0B modules have a MSL rating as indicated in the Device Codes table, last page of this document.

Post Solder Cleaning and Drying Considerations

Post solder cleaning is usually the final circuit-board assembly process prior to electrical board testing. The result of inadequate cleaning and drying can affect both the reliability of a power module and the testability of the finished circuit-board assembly. For guidance on appropriate soldering, cleaning and drying procedures, refer to OmniOn Board Mounted Power Modules: Soldering and Cleaning Application Note (AP01-056EPS).

Technical Specifications (continued)

EMC Considerations

The circuit and plots in Figure 26 shows a suggested configuration to meet the conducted emission limits of EN55032 Class B. For further information on designing for EMC compliance, please refer to the FLT012A0Z data sheet.

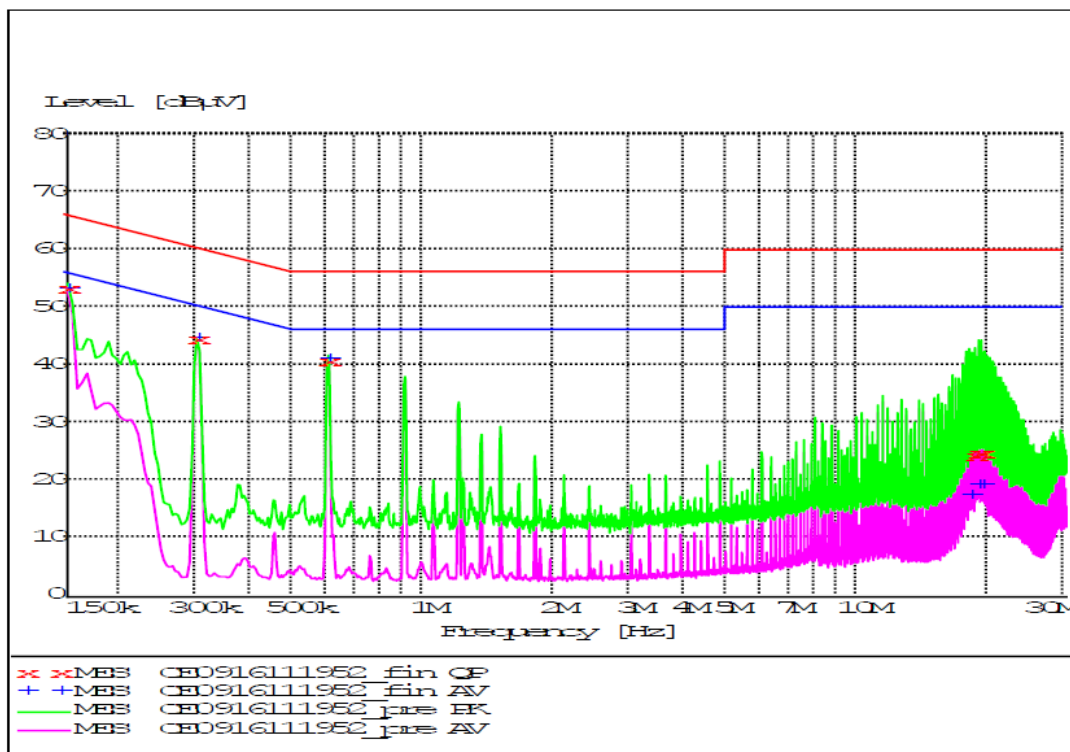
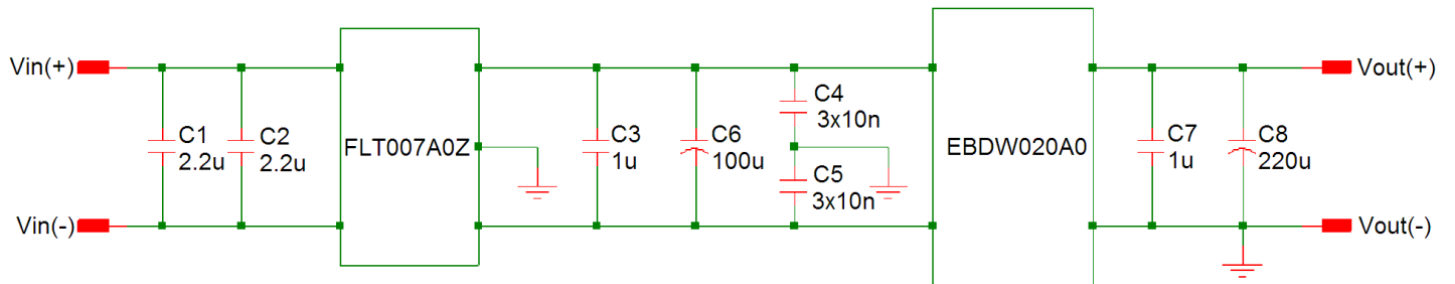


Figure 26. EMC Considerations

Technical Specifications (continued)

Packaging Details

All versions of the EBDW020A0B are supplied as standard in the plastic trays shown in Figure 27. The trays are self-stacking and each shipping box for the EBDW020A0B module contains 2 or 3 full trays plus one empty hold-down tray giving a total number of 36 power modules.

Tray Specification

| | |
|-------------------------|---|
| Material | PET (1mm) |
| Max surface resistivity | $10^9 - 10^{11} \Omega/\text{PET}$ |
| Color | Clear |
| Capacity | 18 power modules/Through Hole Pin Tray; 12 power modules/SMT Pin Tray |
| Min order quantity | Through Hole Pin: 36pcs (1 box of 2 full trays + 1 empty top tray) SMT Pin: 36pcs (1 box of 3 full trays + 1 empty top tray) |

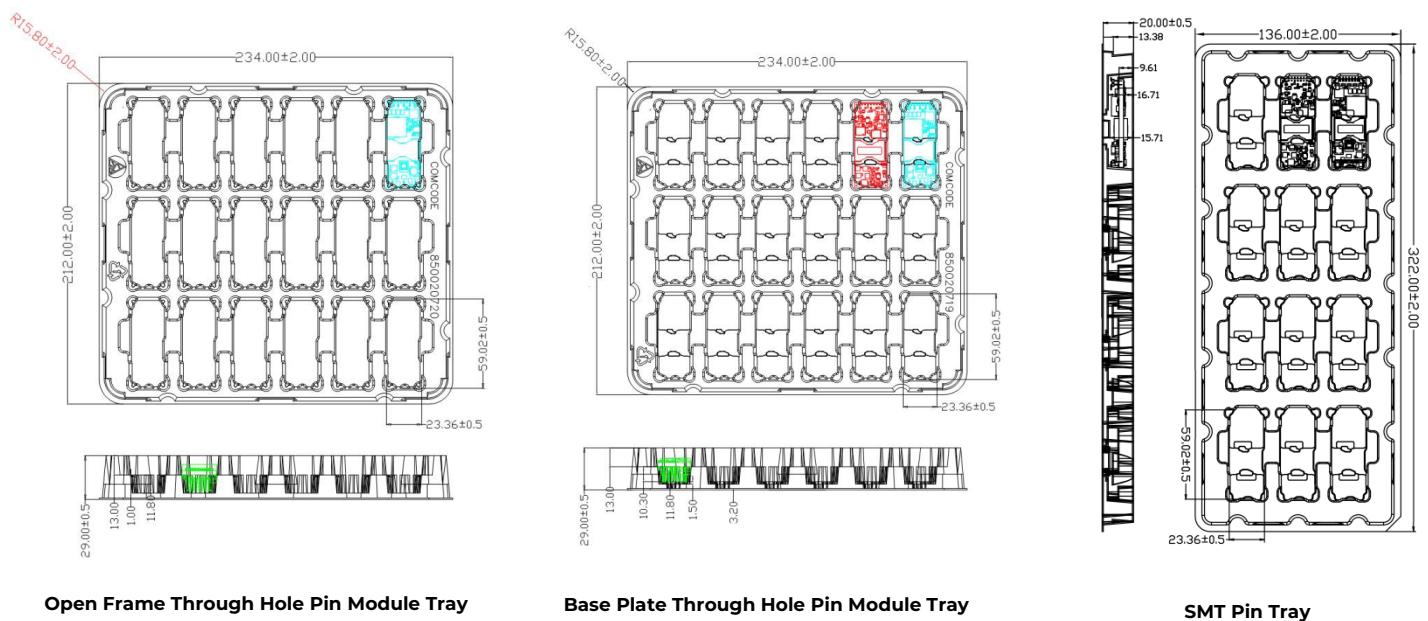


Figure 27. EBDW020 Packaging Tray

Technical Specifications (continued)

Digital Feature Descriptions

PMBus Interface Capability

The EBDW020A0B series is equipped with a digital PMBus interface to allow the module to be configured, and communicate with system controllers. Detailed timing and electrical characteristics of the PMBus can be found in the PMBus Power Management Protocol Specification, Part 1, revision 1.2, available at <http://pmbus.org>. The EBDW020A0B supports both the 100kHz and 400kHz bus timing requirements. The EBDW020A0B shall stretch the clock, as long as it does not exceed the maximum clock LO period of 20ms. The EBDW020A0B will check the Packet Error Checking scheme (PEC) byte, if provided by the PMBus master, and include a PEC byte in all responses to the master. However, the EBDW020A0B does not require a PEC byte from the PMBus master.

The EBDW020A0B supports a subset of the commands in the PMBus 1.2 specification. Most all of the controller parameters can be programmed using the PMBus and stored as defaults for later use. All commands that require data input or output use the linear format. The exponent of the data words is fixed at a reasonable value for the command and altering the exponent is not supported. Direct format data input or output is not supported by the EBDW020A0B. The supported commands are described in greater detail below.

The EBDW020A0B contains non-volatile memory that is used to store configuration settings and scale factors. The settings programmed into the device are not automatically saved into this non-volatile memory though. The STORE_DEFAULT_ALL command must be used to commit the current settings to non volatile memory as device defaults. The settings that are capable of being stored in non-volatile memory are noted in their detailed descriptions.

SMBALERT Interface Capability

The EBDW020A0B also supports the SMBALERT response protocol. The SMBALERT response protocol is a mechanism through which the EBDW020A0B can alert the PMBus master that it has an active status or alarm condition via pulling the SMBALERT pin to an active low. The master processes this condition, and simultaneously addresses all slaves on the PMBus through the Alert Response Address. Only the slave(s) that caused the alert (and that support the protocol) acknowledges this request. The master performs a modified receive byte operation to get the slave's address. At this point, the master can use the PMBus

status commands to query the slave that caused the alert. Note: The EBDW020A0B can only respond to a single address at any given time. Therefore, the factory default state for the EBDW020A0B module is to retain it's resistor programmed address, when it is in an ALERT active condition, and not respond to the ARA. This allows master systems, which do not support ARA, to continue to communicate with the slave EBDW020A0B using the programmed address, and using the various READ_STATUS commands to determine the cause for the SMBALERT. The CLEAR_FAULTS command will retire the active SMBALERT. However, when the EBDW020A0B module is used in systems that do support ARA, Bit 4 of the MFR_CPIN_ARA_CONFIG command can be used to reconfigure the module to utilize ARA. In this case, the EBDW020A0B will no longer respond to its programmed address, when in an ALERT active state. The master is expected to perform the modified received byte operation, and retire the ALERT active signal. At this time, the EBDW020A0B will return to it's resistor programmed address, allowing normal master-slave communications to proceed. The EBDW020A0B does not contain capability to arbitrate data bus contention caused by multiple modules responding to the modified received byte operation. Therefore, when the ARA is used in a multiple module PMBus application, it is necessary to have the EBDW020A0B module at the lowest programmed address in order for the host to properly determine all modules' address that are associated with an active SMB Alert. Please contact your OmniOn sales representative for further assistance, and for more information on the SMBus alert response protocol, see the System Management Bus (SMBus) specification.

PMBus Addressing

The power module can be addressed through the PMBus using a device address. The module has 64 possible addresses (0 to 63 in decimal) which can be set using resistors connected from the ADDR0 and ADDR1 pins to GND. Note that some of these addresses (0 through 12, 40, 44, 45, and 55 in decimal) are reserved according to the SMBus specifications and may not be useable. The address is set in the form of two octal (0 to 7) digits, with each pin setting one digit. The ADDR1 pin sets the high order digit and ADDR0 sets the low order digit.

Technical Specifications (continued)

The resistor values suggested for each digit are shown in Table 4 (1% tolerance resistors are recommended).

| Digit | Resistor Value (KΩ) |
|-------|---------------------|
| 0 | 10 |
| 1 | 15.4 |
| 2 | 23.7 |
| 3 | 36.5 |
| 4 | 54.9 |
| 5 | 84.5 |
| 6 | 130 |
| 7 | 200 |

Table 4

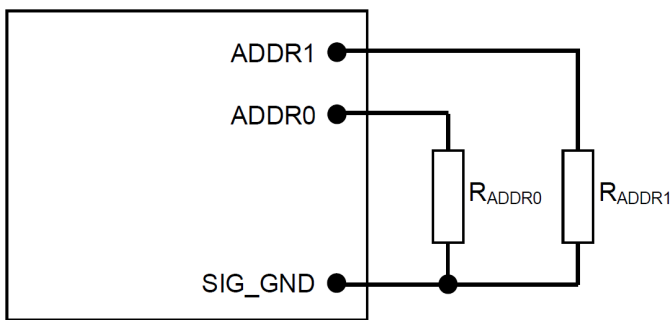
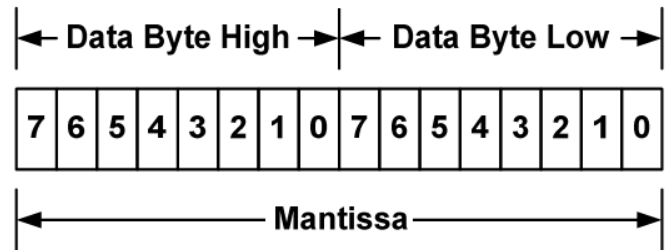


Figure 28. Circuit showing connection of resistors used to set the PMBus address of the module.

The user must know which I²C addresses are reserved in a system for special functions and set the address of the module to avoid interfering with other system operations. Both 100kHz and 400kHz bus speeds are supported by the module. Connection for the PMBus interface should follow the High Power DC specifications given in section 3.1.3 in the SMBus specification V2.0 for the 400kHz bus speed or the Low Power DC specifications in section 3.1.2. The complete SMBus specification is available from the SMBus web site, smbus.org.

PMBus Data Format

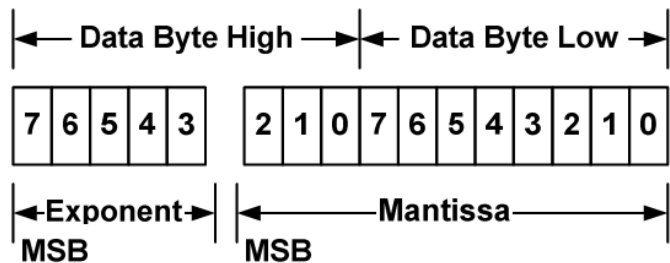
For commands that set or report any voltage thresholds related to output voltage (including VOUT_COMMAND, VOUT_MARGIN, POWER_GOOD and READ_VOUT), the module supports the linear data format consisting of a two byte value with a 16-bit, unsigned mantissa, and a fixed exponent of -12. The format of the two data bytes is shown below:



The value of the number is then given by

$$\text{Value} = \text{Mantissa} \times 2^{-12}$$

For commands that set all other thresholds, voltages or report such quantities, the module supports the linear data format consisting of a two byte value with an 11-bit, two's complement mantissa and a 5-bit, two's complement exponent. The format of the two data bytes is shown below:



The value of the number is then given by

$$\text{Value} = \text{Mantissa} \times 2^{\text{Exponent}}$$

PMBus Enabled On/Off

The module can also be turned on and off via the PMBus interface. The OPERATION command is used to actually turn the module on and off via the PMBus, while the ON_OFF_CONFIG command configures the combination of analog ON/OFF pin input and PMBus commands needed to turn the module on and off. Bit [7] in the OPERATION command data byte enables the module, with the following functions:

- 0 : Output is disabled
- 1 : Output is enabled

This module uses the lower five bits of the ON_OFF_CONFIG data byte to set various ON/OFF options as follows:

| Bit Position | 4 | 3 | 2 | 1 | 0 |
|---------------|----|-----|-----|-----|-----|
| Access | r | r/w | r | r | r |
| Function | PU | CMD | CPR | POL | CPA |
| Default Value | 1 | 1 | 1 | 1 | 1 |

Technical Specifications (continued)

PU: Factory set to 1. EBDW020A0B requires On/Off(i) pin to be connected to proper input rail for module to power up. This bit is used together with the CMD, CPR and ON bits to determine startup.

| Bit Value Action | |
|------------------|--|
| 1 | Module does not power up until commanded by the analog ON/OFF pin and the OPERATION command as programmed in bits [2:0] of the ON_OFF_CONFIG register. |

CMD: The CMD bit controls how the device responds to the OPERATION command.

| Bit Value Action | |
|------------------|--|
| 0 | Module ignores the ON bit in the OPERATION command |
| 1 | Module responds to the ON bit in the OPERATION command |

CPR: Factory set to 1. EBDW020A0B requires On/Off(i) pin to be connected to proper input rail for module to power up. This bit is used together with the CMD and ON bits to determine startup.

| Bit Value Action | |
|------------------|--|
| 1 | Module requires the analog ON/OFF pin to be asserted to start the unit |

PMBus Adjustable Input Undervoltage Lockout

The module allows adjustment of the input under voltage lockout and hysteresis. The command VIN_ON allows setting the input voltage turn on threshold, while the VIN_OFF command sets the input voltage turn off threshold. For both the VIN_ON and VIN_OFF commands, possible values range from 32.000 to 46.000V in 0.125V steps. VIN_ON must be 2.000V greater than VIN_OFF.

Both the VIN_ON and VIN_OFF commands use the “Linear” format with two data bytes. The upper five bits [7:3] of the high data byte form the two’s complement representation of the exponent, which is fixed at –3 (decimal). The remaining 11 bits are used for two’s complement representation of the mantissa, with the 11th bit fixed at zero since only positive numbers are valid. The data associated with VIN_ON and VIN_OFF can be stored to non-volatile memory using the STORE_DEFAULT_ALL command.

PMBus Adjustable Soft Start Delay and Rise Time

The soft start delay and rise time can be adjusted in the module via PMBus. The TON_DELAY command sets the delay time in ms, and allows choosing delay times between 10ms and 500ms, with resolution of

0.5ms. The TON_RISE command sets the rise time in ms, and allows choosing soft start times between 15ms and 500ms, with resolution of 0.5ms. When setting TON_RISE, make sure that the charging current for output capacitors can be delivered by the module in addition to any load current to avoid nuisance tripping of the overcurrent protection circuitry during startup. Both the TON_RISE and TON_DELAY commands use the “Linear” format with two data bytes. The upper five bits [7:3] of the high data byte form the two’s complement representation of the exponent, which is fixed at –1 (decimal). The remaining 11 bits are used for two’s complement representation of the mantissa, with the 11th bit fixed at zero since only positive numbers are valid. The data associated with TON_RISE and TON_DELAY can be stored to non-volatile memory using the STORE_DEFAULT_ALL command.

Output Voltage Adjustment Using the PMBus

The EBDW020A0B module output voltage set point is adjusted using the VOUT_COMMAND. The output voltage setting uses the Linear data format, with the 16 bits of the VOUT_COMMAND formatted as an unsigned mantissa, and a fixed exponent of -12 (decimal) (read from VOUT_MODE).

$$VOUT = \text{Mantissa} \times 2^{-12}$$

The range limits for VOUT_COMMAND are 5.00V to 13.20V, and the resolution is 0.244mV.

The data associated with VOUT_COMMAND can be stored to non-volatile memory using the STORE_DEFAULT_ALL command.

Output Voltage Margining Using the PMBus

The EBDW020A0B module can also have its output voltage margined via PMBus commands. The command VOUT_MARGIN_HIGH sets the margin high voltage, while the command VOUT_MARGIN_LOW sets the margin low voltage. Both the VOUT_MARGIN_HIGH and VOUT_MARGIN_LOW commands use the “Linear” mode with the exponent fixed at –12 (decimal). The data associated with VOUT_MARGIN_HIGH and VOUT_MARGIN_LOW can be stored to non-volatile memory using the STORE_DEFAULT_ALL command.

The module is commanded to go to the margined high or low voltages using the OPERATION command. Bits [5:2] are used to enable margining as follows:

Technical Specifications (continued)

00XX : Margin Off

0110 : Margin Low (Act on Fault)

1010 : Margin High (Act on Fault)

Measuring Output Voltage Using the PMBus

The module can provide output voltage information using the READ_V_{OUT} command. The command returns two bytes of data in the linear format, with the 16 bits of the READ_V_{OUT} formatted as an unsigned mantissa, and a fixed exponent of -12 (decimal).

During module manufacture, an offset correction value is written into the non-volatile memory of the module to null errors in the tolerance and A/D conversion of V_{OUT}. The command MFR_V_{OUT_READ_CAL_OFFSET} can be used to read

the offset - two bytes consisting of a signed 16-bit mantissa in two's complement format, using a fixed exponent of -12 (decimal). The resolution is 0.244mV. The corrected Output voltage reading is then given by:

$$V_{OUT}(\text{Read}) = [V_{OUT}(A/D) + \text{MFR_V}_{OUT_READ_CAL_OFFSET}$$

Measuring Input Voltage Using the PMBus

The module can provide input voltage information using the READ_V_{IN} command. The command returns two bytes of data in the linear format. The upper five bits [7:3] of the high data byte form the two's complement representation of the exponent, which is fixed at -3 (decimal). The remaining 11 bits are used for two's complement representation of the mantissa, with the 11th bit fixed at zero since only positive numbers are valid.

During module manufacture, offset and gain correction values are written into the non-volatile memory of the module to null errors in the tolerance and A/D conversion of V_{IN}. The command MFR_V_{IN_READ_CAL_OFFSET} can be used to read the offset - two bytes consisting of a five-bit exponent (fixed at -3) and a 11-bit mantissa in two's complement format. The resolution is 120mV. The command MFR_V_{IN_READ_CAL_GAIN} can be used to read the gain correction - two bytes consisting of a unsigned 16 bit number. The resolution of this correction factor 0.000122. The corrected input voltage reading is then given by:

$$V_{IN}(\text{Read}) = [V_{IN}(A/D + (\text{MFR_V}_{IN_READ_CAL_GAIN}/8192))] + \text{MFR_V}_{IN_READ_CAL_OFFSET}$$

Measuring Output Current Using the PMBus

The module measures output current by using the output filter inductor winding resistance as a current sense element. The module can provide output current information using the READ_I_{OUT} command. The command returns two bytes of data in the linear format. The upper five bits [7:3] of the high data byte form the two's complement representation of the exponent, which is fixed at -4 (decimal). The remaining 11 bits are used for two's complement representation of the mantissa, with the 11th bit fixed at zero since only positive numbers are valid.

During module manufacture, offset and gain correction values are written into the non-volatile memory of the module to null errors in the tolerance and A/D conversion of I_{OUT}. The command MFR_I_{OUT_READ_CAL_OFFSET} can be used to read the offset - two bytes consisting of a five-bit exponent (fixed at -4) and a 11-bit mantissa in two's complement format. The resolution is 0.19A. The command MFR_I_{OUT_READ_CAL_GAIN} can be used to read the gain correction - two bytes consisting of a unsigned 16 bit number. The resolution of this correction factor 0.000122. The READ_I_{OUT} command provides module average output current information. This command only supports positive current sourced from the module. If the converter is sinking current a reading of 0 is provided.

$$I_{OUT}(\text{Read}) = [I_{OUT}(A/D + (\text{MFR_I}_{OUT_READ_CAL_GAIN}/8192))] + \text{MFR_I}_{OUT_READ_CAL_OFFSET}$$

Measuring the Temperature using the PMBus

The module can provide temperature information using the READ_TEMPERATURE_1 command. The command returns two bytes of data in the linear format. The upper five bits [7:3] of the high data byte form the two's complement representation of the exponent, which is fixed at -2 (decimal). The remaining 11 bits are used for two's complement representation of the mantissa.

Note that the module's temperature sensor is located close to the module hot spot TH1 (see Thermal Considerations). and is subjected to temperatures higher than the ambient air temperature near the module. The temperature reading will be highly influenced by module load and airflow conditions.

Technical Specifications (continued)

Reading the Status of the Module using the PMBus

The module supports a number of status information commands implemented in PMBus. However, not all features are supported in these commands. A X in the FLAG cell indicates the bit is not supported.

STATUS_WORD : Returns two bytes of information with a summary of the module's fault/warning conditions.

| Bit Position | Flag | Default Value |
|--------------|-----------------------------------|---------------|
| 15 | V _{OUT} fault | 0 |
| 14 | I _{OUT} fault or warning | 0 |
| 13 | Input Voltage fault | 0 |
| 12 | X | 0 |
| 11 | POWER_GOOD# (is negated) | 0 |
| 10 | X | 0 |
| 9 | X | 0 |
| 8 | X | 0 |

High Byte

| Bit Position | Flag | Default Value |
|--------------|------------------------------|---------------|
| 7 | X | 0 |
| 6 | OFF | 0 |
| 5 | V _{OUT} Overvoltage | 0 |
| 4 | I _{OUT} Overcurrent | 0 |
| 3 | V _{IN} Undervoltage | 0 |
| 2 | Temperature | 0 |
| 1 | CML (Comm. Memory Fault) | 0 |
| 0 | X | 0 |

Low Byte

STATUS_V_{OUT} : Returns one byte of information relating to the status of the module's output voltage related faults.

| Bit Position | Flag | Default Value |
|--------------|---------------------------|---------------|
| 7 | V _{OUT} OV Fault | 0 |
| 6 | X | 0 |
| 5 | X | 0 |
| 4 | X | 0 |
| 3 | X | 0 |
| 2 | X | 0 |
| 1 | X | 0 |
| 0 | X | 0 |

STATUS_I_{OUT} : Returns one byte of information relating to the status of the module's output current related faults.

| Bit Position | Flag | Default Value |
|--------------|-----------------------------|---------------|
| 7 | I _{OUT} OC Fault | 0 |
| 6 | X | 0 |
| 5 | I _{OUT} OC Warning | 0 |
| 4 | X | 0 |
| 3 | X | 0 |
| 2 | X | 0 |
| 1 | X | 0 |
| 0 | X | 0 |

STATUS_INPUT : Returns one byte of information relating to the status of the module's input voltage related faults.

| Bit Position | Flag | Default Value |
|--------------|--------------------------|---------------|
| 7 | V _{IN} OV Fault | 0 |
| 6 | X | 0 |
| 5 | X | 0 |
| 4 | V _{IN} UV Fault | 0 |
| 3 | Module Off (Low VIN) | 0 |
| 2 | X | 0 |
| 1 | X | 0 |
| 0 | X | 0 |

STATUS_TEMPERATURE : Returns one byte of information relating to the status of the module's temperature related faults.

| Bit Position | Flag | Default Value |
|--------------|------------|---------------|
| 7 | OT Fault | 0 |
| 6 | OT Warning | 0 |
| 5 | X | 0 |
| 4 | X | 0 |
| 3 | X | 0 |
| 2 | X | 0 |
| 1 | X | 0 |
| 0 | X | 0 |

STATUS_CML : Returns one byte of information relating to the status of the module's communication related faults.

| Bit Position | Flag | Default Value |
|--------------|-----------------------------|---------------|
| 7 | Invalid/Unsupported Command | 0 |
| 6 | Invalid/Unsupported Data | 0 |
| 5 | Packet Error Check Failed | 0 |
| 4 | X | 0 |
| 3 | X | 0 |
| 2 | X | 0 |
| 1 | X | 0 |
| 0 | X | 0 |

Technical Specifications (continued)

Summary of Supported PMBus Commands

This section outlines the PMBus command support for the EBDW020A0B bus converters. Each supported command is outlined in order of increasing command codes with a quick reference table of all supported commands included at the end of the section.

Each command will have the following basic information.

Command Name [Code]

Command support

Data format

Factory default

Additional information may be provided in tabular form or other format, if necessary.

OPERATION [0x01]

Command support: On/Off Immediate and Margins (Act on Fault). Soft off with sequencing not supported and Margins (Ignore Fault) not supported. Therefore bits 6, 3, 2, 1 and 0 set as read only at factory defaults.

| | | | | | | | | |
|----------------------|----------------------------|---|-----------|-----|-----------|---|-----|---|
| Format | 8 bit unsigned (bit field) | | | | | | | |
| Bit Position | 7 | 6 | 5 | 4 | 3 | 2 | 1 | 0 |
| Access | r/w | r | r/w | r/w | r | r | r | r |
| Function | ON/OFF | | Bits[5:4] | | Bits[3:2] | | N/A | |
| Default Value | 1 | 0 | 0 | 0 | 1 | 0 | 0 | 0 |

ON_OFF_CONFIG [0x02]

Command support: Bit 1 polarity will be set based upon module code [0=Negative on/off logic, 1=positive on/off logic to allow customer system to know hardware on/off logic

| | | | | | | | | |
|----------------------|----------------------------|---|---|----------|-----------|-----------|-------------|-----------|
| Format | 8 bit unsigned (bit field) | | | | | | | |
| Bit Position | 7 | 6 | 5 | 4 | 3 | 2 | 1 | 0 |
| Access | r | r | r | r | r | r/w | r | r |
| Function | (reserved) | | | Bit 4 pu | Bit 3 cmd | Bit 2 cpr | Bit 1 pol | Bit 0 cpa |
| Default Value | 0 | 0 | 0 | 1 | 1 | 1 | module code | 1 |

CLEAR_FAULTS [0x03]

Command support: All functionality

STORE_DEFAULT_ALL[0x11]

Command support: All functionality – Stores operating parameters to EEPROM memory.

RESTORE_DEFAULT_ALL[0x12]

Command support: All functionality – Restores operating parameters from EEPROM memory.

VOUT_MODE[0x20]

Command support: Supported. Factory default: 0x14 – indicates linear mode with exp = -12

Technical Specifications (continued)

| | | | | | | | | |
|----------------------|----------------------------|---|---|---|-------------------------|---|---|---|
| Format | 8 bit unsigned (bit field) | | | | | | | |
| Bit Position | 7 | 6 | 5 | 4 | 3 | 2 | 1 | 0 |
| Access | r | r | r | r | r | r | r | r |
| Function | Mode (linear) | | | | 2's complement exponent | | | |
| Default Value | 0 | 0 | 0 | 1 | 0 | 1 | 0 | 0 |

VOUT_COMMAND [0x21]

Data format: 16 bit unsigned mantissa (implied exponent per VOUT_MODE)

Factory default: 12.000V ($12.00 / 2^{-12} \rightarrow 49,152 = 0xC000$)

Range limits (max/min): 13.200V/5.000V

Units: volt

Command support: Supported

VOUT_CAL_OFFSET [0x23]

Range limits (max/min): +0.25/-0.25

Units: volt

Command support: read/write support, lockout per MFR_DEVICE_TYPE, functionality implemented

VOUT_MARGIN_HIGH [0x25]

Range limits (max/min): 13.2/5.0

Units: volt

Command support: read/write support, full functionality except "Ignore faults".

Note: Range cross-check - value must be greater than V_{OUT_MARGIN_LOW} value.

VOUT_MARGIN_LOW [0x26]

Range limits (max/min): 13.2/5.0

Units: volt

Command support: read/write support, full functionality except "Ignore faults".

Note: Range cross-check - value must be less than V_{OUT_MARGIN_HIGH} value.

VOUT_DROOP [0x28]

Factory default: 0 (No droop); 15 (Parallel operation)

Range limits (max/min): 50/0

Units: mv/A

Command support: All functionality

VIN_ON [0x35]

Range limits (max/min): 46/32

Units: volt

Command support: All functionality

Note: Special interlock checks between V_{IN_ON} and V_{IN_OFF} maintain a hysteresis gap of 2V minimum and do not allow the OFF level to be higher than and ON level

VIN_OFF [0x36]

Range limits (max/min): 46/32

Units: volt

Command support: All functionality

Technical Specifications (continued)

Note: Special interlock checks between V_{IN_ON} and V_{IN_OFF} maintain a hysteresis gap of 2V minimum and do not allow the OFF level to be higher than and ON level

VOUT_OV_FAULT_LIMIT [0x40]

Range limits (max/min): 15.99/8.0

Units: volt

Command support: All functionality

Note: Range cross-check – value must be greater than $V_{OUT_COMMAND}$ value.

VOUT_OV_FAULT_RESPONSE [0x41]

Command support:

- Response settings (bits RSP0:1) – only a setting of 10, unit shuts down and responds according to the retry settings below, is supported.
- Retry settings (bits RS0:2) – only settings of 000 (unit does not attempt to restart on fault) and 111 unit continuously restarts (normal startup) while fault is present until commanded off, bias power is removed or another fault condition causes the unit to shutdown.
- Delay time setting (bits 0-2) – only DT0:2 = 0 (no delay) supported.

Default Settings: The default settings for the $V_{OUT_OV_FAULT_RESPONSE}$ command are;

- The unit shuts down in response to a V_{OUT} over voltage condition.
- The unit will continuously restart (normal startup) while the V_{OUT} over voltage condition is present until it is commanded off, bias power is removed or another fault condition causes the unit to shutdown.
- The shutdown delay is set to 0 delay cycles.

| Format | 8 bit unsigned (bit field) | | | | | | | |
|---------------|----------------------------|--------|-------|-------|-------|-------|-------|-------|
| Bit Position | 7 | 6 | 5 | 4 | 3 | 2 | 1 | 0 |
| Access | r | r | r/w | r/w | r/w | r | r | r |
| Function | RSP[1] | RSP[0] | RS[2] | RS[1] | RS[0] | DT[2] | DT[1] | DT[0] |
| Default Value | 1 | 0 | 1 | 1 | 1 | 0 | 0 | 0 |

IOUT_OC_FAULT_LIMIT [0x46]

Range limits (max/min): 41.5/20

Units: amp

Command support: All functionality

Note: Range cross-check – value must be greater than $I_{OUT_OC_WARN_LIMIT}$ value.

IOUT_OC_FAULT_RESPONSE [0x47]

Command support:

- Response settings (bits RSP0:1) – only settings of 11, unit shuts down and responds according to the retry settings below, is supported.
- Retry settings (bits RS0:2) – only settings of 000 (unit does not attempt to restart on fault) and 111 unit continuously restarts (normal startup) while fault is present until commanded off, bias power is removed or another fault condition causes the unit to shutdown.
- Delay time setting (bits 0-2) – only DT0:2 = 0 (no delay) supported.

Default Settings: The default settings for the $I_{OUT_OC_FAULT_RESPONSE}$ command are;

- The unit shuts down in response to an I_{OUT} over current condition.
- The unit will continuously restart (normal startup) while the I_{OUT} over current condition is present until it is commanded off, bias power is removed or another fault condition causes the unit to shutdown.
- The shutdown delay is set to 0 delay cycles.

Technical Specifications (continued)

| | | | | | | | | |
|----------------------|----------------------------|--------|-------|-------|-------|-------|-------|-------|
| Format | 8 bit unsigned (bit field) | | | | | | | |
| Bit Position | 7 | 6 | 5 | 4 | 3 | 2 | 1 | 0 |
| Access | r | r | r/w | r/w | r/w | r | r | r |
| Function | RSP[1] | RSP[0] | RS[2] | RS[1] | RS[0] | DT[2] | DT[1] | DT[0] |
| Default Value | 1 | 1 | 1 | 1 | 1 | 0 | 0 | 0 |

IOUT_OC_WARN_LIMIT [0x4A]

Range limits (max/min): 30.3/7.6

Units: amp

Command support: read/write support, functionality complete

Note: Range cross-check – value must be less than IOUT_OC_FAULT_LIMIT value.

OT_FAULT_LIMIT [0x4F]

Range limits (max/min): 140/25

Units: degrees C.

Command support: All functionality

Note: Range cross-check – value must be greater than OT_WARN_LIMIT value.

OT_FAULT_RESPONSE [0x50]

Command support:

- Response settings (bits RSP0:1) – only setting of 10, unit shuts down and responds according to the retry settings below.
- Retry settings (bits RS0:2) – only settings of 000 (unit does not attempt to restart on fault) and 111 (unit continuously restarts (normal startup) while fault is present until commanded off, bias power is removed or another fault condition causes the unit to shutdown).
- Delay time setting (bits DT0:2) – only DT0:2 = 0 (no delay) supported.

Default Settings: The default settings for the OT_FAULT_RESPONSE command are;

- The unit shuts down in response to an over-temperature condition.
- The unit will continuously restart (normal startup) while the over-temperature condition is present until it is commanded off, bias power is removed or another fault condition causes the unit to shutdown.
- The shutdown delay is set to 0 delay cycles.

| | | | | | | | | |
|----------------------|----------------------------|--------|-------|-------|-------|-------|-------|-------|
| Format | 8 bit unsigned (bit field) | | | | | | | |
| Bit Position | 7 | 6 | 5 | 4 | 3 | 2 | 1 | 0 |
| Access | r | r | r/w | r/w | r/w | r | r | r |
| Function | RSP[1] | RSP[0] | RS[2] | RS[1] | RS[0] | DT[2] | DT[1] | DT[0] |
| Default Value | 1 | 0 | 1 | 1 | 1 | 0 | 0 | 0 |

OT_WARN_LIMIT [0x51]

Range limits (max/min): 125/25

Units: degrees C.

Command support: All functionality

Note: Range cross-check – value must be less than OT_FAULT_LIMIT value.

VIN_OV_FAULT_LIMIT [0x55]

Range limits (max/min): 90/48

Units: volt

Command support: All functionality

Technical Specifications (continued)

VIN_OV_FAULT_RESPONSE [0x56]

Command support:

Response settings (bits RSP0:1) – only settings of 11 (The device’s output is disabled while the fault is present.) is supported..

- Retry settings (bits RS0:2) – only settings of 000 (unit does not attempt to restart on fault).
- Delay time setting (bits 0-2) – only DT0:2 = 0 (no delay) supported.

Default Settings: The default settings for the VIN_OV_FAULT_RESPONSE command are;

- The unit shuts down in response to a VIN over voltage condition.
- The unit will continuously prepares to restart (normal startup) while the VIN over voltage condition is present until it is commanded off, bias power is removed, the VIN over voltage condition is removed, or another fault condition causes the unit to shutdown.
- The shutdown delay is set to 0 delay cycles.

| Format | 8 bit unsigned (bit field) | | | | | | | |
|---------------|----------------------------|--------|-------|-------|-------|-------|-------|-------|
| Bit Position | 7 | 6 | 5 | 4 | 3 | 2 | 1 | 0 |
| Access | r | r | r | r | r | r | r | r |
| Function | RSP[1] | RSP[0] | RS[2] | RS[1] | RS[0] | DT[2] | DT[1] | DT[0] |
| Default Value | 1 | 1 | 0 | 0 | 0 | 0 | 0 | 0 |

POWER_GOOD_ON [0x5E]

Range limits (max/min): 13.2/4.8

Units: volt

Command support: full support

Note: Range cross-check – value must be greater than POWER_GOOD_OFF value by 1.6V.

POWER_GOOD_OFF [0x5F]

Range limits (max/min): 13.2/3.0

Units: volt

Command support: full support

Note: Range cross-check – value must be less than POWER_GOOD_ON value by 1.6V.

TON_DELAY [0x60]

Range limits (max/min): 500/40

Units: milliseconds

Command support: full support

TON_RISE [0x61]

Range limits (max/min): 500/40

Units: milliseconds

Command support: full support

Technical Specifications (continued)

STATUS_WORD [0x79]

Command support: full implementation for supported functions (note: Fans, MFR_SPECIFIC, Unknown not supported)

| Format | 8 bit unsigned (bit field) | | | | | | | |
|--------------|----------------------------|--------|-------|-----------------------|-------|-------------------|--------------------|-----------------------|
| Bit Position | 15 | 14 | 13 | 12 | 11 | 10 | 9 | 8 |
| Access | r | r | r | r | r | r | r | r |
| Function | VOUT | I/POUT | INPUT | MFR_SPEC ¹ | #PWR_ | FANS ¹ | OTHER ¹ | UN KNOWN ¹ |

| Format | 8 bit unsigned (bit field) | | | | | | | |
|--------------|----------------------------|----------------|-------------------|----------------|------------------|------|-----|-------------------------------|
| Bit Position | 7 | 6 | 5 | 4 | 3 | 2 | 1 | 0 |
| Access | r | r | r | r | r | r | r | r |
| Function | BUSY ¹ | OUTPUT _OFF | VOUT_O V_FAULT | IOOUT_OC_FAULT | VIN_UV _FAULT | TEMP | CML | NONE OF ABOVE ¹ |

(1) Not supported

STATUS_VOUT [0x7A]

Command support: VOUT_OV_FAULT support, all bit reset supported

| Format | 8 bit unsigned (bit field) | | | | | | | |
|--------------|----------------------------|-------------------------------|-------------------------------|--------------------------------|--------------------------------|--------------------------------|--------------------------------|--|
| Bit Position | 7 | 6 | 5 | 4 | 3 | 2 | 1 | 0 |
| Access | r/reset(1) | r/ reset | r/ reset | r/ reset | r/ reset | r/ reset | r/ reset | r/ reset |
| Function | VOUT_OV _FAULT | VOUT_OV _WARN ¹ | VOUT_UV _WARN ¹ | VOUT_UV _FAULT ¹ | VOUT_MAX _WARN ¹ | TON_MAX_ FAULT ¹ | TOFF_MAX_ WARN ¹ | VOUT TRACKING ERROR ¹ |

(1) Not supported

STATUS_IOUT [0x7B]

Command support: IOOUT_OC_FAULT support, all bit reset supported

| Format | 8 bit unsigned (bit field) | | | | | | | |
|--------------|----------------------------|--|-------------------|---------------------------------|------------------------------------|---|--------------------------------|-------------------------------|
| Bit Position | 7 | 6 | 5 | 4 | 3 | 2 | 1 | 0 |
| Access | r/ reset(1) | r/ reset | r/ reset | r/ reset | r/ reset | r/ reset | r/ reset | r/ reset |
| Function | IOOUT_OC _FAULT | IOOUT_OC _LV _FAULT ¹ | IOOUT_OC _WARN | IOOUT_UC _FAULT ¹ | Current ShareFault ¹ | In Power Limiting Mode ¹ | POUT_OP _FAULT ¹ | POUT_OP _WARN ¹ |

(1) Not supported

STATUS_INPUT [0x7C]

Command support: VIN_OV_FAULT support, all bit reset supported

| Format | 8 bit unsigned (bit field) | | | | | | | |
|--------------|----------------------------|------------------------------|------------------------------|------------------|------------------------------------|-------------------------------|------------------------------|------------------------------|
| Bit Position | 7 | 6 | 5 | 4 | 3 | 2 | 1 | 0 |
| Access | r/ reset(1) | r/ reset | r/ reset | r/ reset | r/ reset | r/ reset | r/ reset | r/ reset |
| Function | VIN_OV _FAULT | VIN_OV _WARN ¹ | VIN_UV _WARN ¹ | VIN_UV _FAULT | Unit Off (low input voltage) | IIN_OC _FAULT ¹ | IIN_OC _WARN ¹ | PIN_OP _WARN ¹ |

(1) Not supported

Technical Specifications (continued)

STATUS_TEMPERATURE [0x7D]

Command support: OT_WARN, OT_FAULT supported, all bit reset supported

| | | | | | | | | |
|---------------------|----------------------------|----------|----------------------|-----------------------|----------|----------|----------|----------|
| Format | 8 bit unsigned (bit field) | | | | | | | |
| Bit Position | 7 | 6 | 5 | 4 | 3 | 2 | 1 | 0 |
| Access | r/ reset(1) | r/ reset | r/ reset | r/ reset | r/ reset | r/ reset | r/ reset | r/ reset |
| Function | OT_FAULT | OT_WARN | UT_WARN ¹ | UT_FAULT ¹ | reserved | reserved | reserved | reserved |

(1) Not supported

STATUS_VOUT [0x7A]

Command support: VOUT_OV_FAULT support, all bit reset supported.

| | | | | | | | | |
|---------------------|----------------------------|--------------|------------|---------------------------|-------------------------|----------|--------------------------------|--|
| Format | 8 bit unsigned (bit field) | | | | | | | |
| Bit Position | 7 | 6 | 5 | 4 | 3 | 2 | 1 | 0 |
| Access | r/ reset(1) | r/ reset | r/ reset | r/ reset | r/ reset | r/ reset | r/ reset | r/ reset |
| Function | INVALID CMD | INVALID DATA | PEC FAILED | MEMORY FAULT ¹ | PROC FAULT ¹ | reserved | COM FAULT (other) ¹ | Memory/ Logic fault (other) ¹ |

(1) Not supported

READ_VIN [0x88]

Command support: full support

READ_VOUT [0x8B]

Command support: full support

READ_IOUT [0x8C]

Command support: full support

READ_TEMPERATURE_1 [0x8D]

Command support: full support

MFR_DEVICE_TYPE [0xD0]

Command support: partial support in place (Mod Name)

| | | | | | | | | | | | | | | | | | |
|-----------------|-----------------|-----|-----|-----|-----|---|---|---|-------------|-----|-----|-----|-----|-----|-----|-----|-----|
| Format | Unsigned Binary | | | | | | | | | | | | | | | | |
| Bit Pos. | 7 | 6 | 5 | 4 | 3 | 2 | 1 | 0 | 7 | 6 | 5 | 4 | 3 | 2 | 1 | 0 | |
| Access | r/w | r/w | r/w | r/w | r/w | r | r | r | r/w | r/w | r/w | r/w | r/w | r/w | r/w | r/w | |
| Function | Reserved | | | | | | | | Module Name | | | | | | | WPE | Res |
| Default | 0 | 0 | 0 | 0 | 0 | 0 | 0 | 0 | 1 | 0 | 0 | 0 | 1 | 1 | 1 | 0 | |

| Byte | Bit | Description | Value | Meaning |
|----------|-----|--------------------------|-------|----------------------------------|
| High | 7:0 | Reserved | | |
| Low Byte | 7:2 | Module Name ¹ | 1xxxx | Module Name |
| | 1 | WPE | 0 | Write Protect Enable not active. |
| | 0 | Reserved | 1 | Write Protect Enable active. |
| | | | 0 | Reserved |

1. Present module designations (Non-isolated units will have a 0XXXXX format)

- QBDW033A0B4xxx: 100000
- QBDW025A0B4xxx: 100001
- EBDW020A0B4xxx: 100010
- EBDW020A0B4xxx: 100011

Technical Specifications (continued)

MFR_VOUT_READ_CAL_GAIN [0xD1]

Factory default: 0x2000

Range limits (max/min): 0x2666/0x1999

Units: N/A

Command support: support for V_{OUT} gain calibration (factor in flash), lockout per MFR_DEVICE_TYPE

MFR_VOUT_READ_CAL_OFFSET [0xD2]

Range limits (max/min): exp must = -12

Units: N/A

Command support: support for V_{OUT} offset calibration (factor in flash), lockout per MFR_DEVICE_TYPE

MFR_VIN_READ_CAL_GAIN [0xD3]

Factory default: 0x2000

Range limits (max/min): 0x2666/0x1999

Command support: support for V_{IN} gain calibration (factor in flash), lockout per MFR_DEVICE_TYPE

MFR_VIN_READ_CAL_OFFSET [0xD4]

Data format: V_{IN} linear format

Range limits (max/min): exp must = -3

Units: N/A

Command support: support for V_{IN} offset calibration (factor in flash), lockout per MFR_DEVICE_TYPE

MFR_IOUT_CAL_GAIN [0xD6]

Range limits (max/min): 0x2666/0x1999

Units: N/A

Command support: support for I_{OUT} gain calibration, lockout per MFR_DEVICE_TYPE

MFR_IOUT_CAL_OFFSET [0xD7]

Range limits (max/min): exp must = -4

Units: N/A

Command support: support for I_{OUT} offset calibration, lockout per MFR_DEVICE_TYPE

MFR_FW_REV [0xDB]

Range limits (max/min): 0 - 0xff (0.00 – 15.15)

Units: N/A

Command support: full read support

MFR_C1_C2_ARA_CONFIG [0xE0]

Command Code

Command support: Full support.

| Command | MFR_C1_C2_ARA_CONFIG | | | | | | | |
|---------------|----------------------------|---|---|-----|------------------|-----|-----|-----|
| Format | 8 bit unsigned (bit field) | | | | | | | |
| Bit Position | 7 | 6 | 5 | 4 | 3 | 2 | 1 | 0 |
| Access | r | r | r | r/w | r/w | r/w | r/w | r/w |
| Function | Reserved | | | ARA | Assignment Table | | | |
| Default Value | 0 | 0 | 0 | 0 | 0 | 0 | 0 | 0 |

Technical Specifications (continued)

| Bit | Description | Value | Meaning |
|-----|--------------------|-------|---|
| 7:5 | Reserved | 000 | Reserved |
| 4 | ARA | 0 | ARA not functional, module remains at resistor programmed address when SMBLAERT is asserted |
| | | 1 | ARA functional, module responds to ARA only, when SMBLAERT is asserted |
| 3:0 | PIN Configuration* | 0000 | T/C1 pin: ON/OFF (Secondary) C2 pin: POWER_GOOD |
| | | 0001 | T/C1 pin: TRIM C2 pin: POWER_GOOD |
| | | 0010 | T/C1 pin: TRIM C2 pin: ON/OFF (Secondary) |

* All EBDW without -P option

| Bit | Description | Value | Meaning |
|-----|---------------------|-------|---|
| 7:5 | Reserved | 000 | Reserved |
| 4 | ARA | 0 | ARA not functional, module remains at resistor programmed address when SMBLAERT is asserted |
| | | 1 | ARA functional, module responds to ARA only, when SMBLAERT is asserted |
| 3:0 | PIN Configuration** | 0000 | T/C1 pin: ON/OFF (Secondary) C2 pin: POWER_GOOD |

** All EBDW with -P option

MFR_C2_LOGIC [0xE1]

Command Code

Command support: full support (bits 0 and 1) as follows:

| Command | MFR_C2_LOGIC | | | | | | | | |
|---------------|----------------------------|---|---|---|---|---|---|-----|-------|
| Format | 8 bit unsigned (bit field) | | | | | | | | |
| Bit Position | 7 | 6 | 5 | 4 | 3 | 2 | 1 | 0 | |
| Access | r | r | r | r | r | r | r/w | r/w | |
| Function | Reserved | | | | | | On/Off(primary & secondary) combination | | logic |
| Default Value | 0 | 0 | 0 | 0 | 0 | 0 | 0 | 0 | |

| Bit | Description | Value | Meaning |
|-----|-----------------------------|--------|---|
| 7:2 | Reserved | 000000 | Reserved |
| 1 | ON/OFF Configuration | 0 | Secondary side on/off pin state, when mapped to either T/C1 or C2, is ignored |
| | | 1 | AND – Primary and Secondary side on/off |
| 0 | Secondary Side ON/OFF Logic | 0 | Negative Logic (Low Enable: Input < 0.8V wrt Vout(-)) |
| | | 1 | Positive Logic (High Enable: Input > 2.0V wrt Vout(-)) |

Technical Specifications (continued)

MFR_PGOOD_POLARITY [0xE2]

Command support: full support (bit 0) as follows:

- Bit 0: 0 = Negative PGOOD logic (module PGOOD asserted when pin is LO, PGOOD de-asserted when pin is HI)
 1 = Positive PGOOD logic (module PGOOD de-asserted when pin is LO, PGOOD asserted when pin is HI)

| Command | MFR_PGOOD_POLARITY | | | | | | | |
|---------------|----------------------------|---|---|---|---|---|---|-------|
| Format | 8 bit unsigned (bit field) | | | | | | | |
| Bit Position | 7 | 6 | 5 | 4 | 3 | 2 | 1 | 0 |
| Access | r | r | r | r | r | r | r | r/w |
| Function | Reserved | | | | | | | logic |
| Default Value | 0 | 0 | 0 | 0 | 0 | 0 | 0 | 1 |

MFR_MODULE_DATE_LOC_SN [0xF0]

Command support: read/write support for 12 byte block, lockout per MFR_DEVICE_TYPE

Technical Specifications (continued)

PMBus Command Quick Reference Table

| PMBUS CMD | CMD CODE | DATA BYTES | DATA FORMAT | DATA UNITS | TRANSFER TYPE | DEFAULT VALUE |
|------------------------|----------|------------|-----------------|------------|---------------|--|
| OPERATION | 0x01 | 1 | Bit field | N/A | R/W byte | 0x80 |
| ON_OFF_CONFIG | 0x02 | 1 | Bit field | N/A | R/W byte | 0x1D (Neg Logic) 0x1F (Pos Logic) |
| CLEAR_FAULTS | 0x03 | 0 | N/A | N/A | Send byte | none |
| STORE_DEFAULT_ALL | 0x11 | 0 | N/A | N/A | Send byte | none |
| RESTORE_DEFAULT_ALL | 0x12 | 0 | N/A | N/A | Send byte | none |
| VOUT_MODE | 0x20 | 1 | mode + exp | N/A | Read byte | 0x14 |
| VOUT_COMMAND | 0x21 | 2 | VOUT linear | Volts | R/W word | 12.000V |
| VOUT_CAL_OFFSET | 0x23 | 2 | VOUT linear | Volts | R/W word | MS |
| VOUT_MARGIN_HIGH | 0x25 | 2 | VOUT linear | Volts | R/W word | 12.600V |
| VOUT_MARGIN_LOW | 0x26 | 2 | VOUT linear | Volts | R/W word | 11.400V |
| VOUT_DROOP | 0x28 | 2 | VOUT linear | mV/A | R/W word | 0 |
| VIN_ON | 0x35 | 2 | VIN linear | v | R/W word | 35.000V |
| VIN_OFF | 0x36 | 2 | VIN linear | v | R/W word | 33.000V |
| VOUT_OV_FAULT_LIMIT | 0x40 | 2 | VOUT linear | v | R/W word | 15.99V |
| VOUT_OV_FAULT_RESPONSE | 0x41 | 1 | Bit field | N/A | R/W byte | 0xB8 |
| IOUT_OC_FAULT_LIMIT | 0x46 | 2 | IOUT linear | Amps | Read Word | 23.000A (w/o -02 option) 28.000A (w -02 option) |
| IOUT_OC_FAULT_RESPONSE | 0x47 | 1 | Bit field | N/A | R/W byte | 0xF8 |
| IOUT_OC_WARN_LIMIT | 0x4A | 2 | IOUT linear | Amps | Read Word | 21.000A |
| OT_FAULT_LIMIT | 0x4F | 2 | TEMP linear | Deg. C | R/W word | 135C |
| OT_FAULT_RESPONSE | 0x50 | 1 | Bit field | N/A | R/W byte | 0xB8 |
| OT_WARN_LIMIT | 0x51 | 2 | TEMP linear | Deg. C | R/W word | 125C |
| VIN_OV_FAULT_LIMIT | 0x55 | 2 | VIN linear | v | R/W word | 85V |
| VIN_OV_FAULT_RESPONSE | 0x56 | 1 | Bit field | N/A | R/W byte | 0xC0 |
| POWER_GOOD_ON | 0x5E | 2 | VOUT linear | v | R/W word | 10.100V |
| POWER_GOOD_OFF | 0x5F | 2 | VOUT linear | V | R/W word | 8.500V |
| TON_DELAY | 0x60 | 2 | Time linear | msec | R/W word | 40ms |
| TON_RISE | 0x61 | 2 | Time linear | msec | R/W word | 40ms |
| STATUS_WORD | 0x79 | 2 | Bit field | N/A | Read word | N/A |
| STATUS_VOUT | 0x7A | 1 | Bit field | N/A | Read byte | N/A |
| STATUS_IOUT | 0x7B | 1 | Bit field | N/A | Read byte | N/A |
| STATUS_INPUT | 0x7C | 1 | Bit field | N/A | Read byte | N/A |
| STATUS_TEMPERATURE | 0x7D | 1 | Bit field | N/A | Read byte | N/A |
| STATUS_CML | 0x7E | 1 | Bit field | N/A | Read byte | N/A |
| READ_VIN | 0x88 | 2 | VIN linear | v | Read word | N/A |
| READ_VOUT | 0x8B | 2 | VOUT linear | v | Read word | N/A |
| READ_IOUT | 0x8C | 2 | IOUT linear | Amps | Read word | N/A |
| READ_TEMP1 | 0x8D | 2 | TEMP linear | Deg. C | Read word | N/A |
| PMBUS_REVISION | 0x98 | 1 | Bit Field | n/a | Read byte | 1.2 |
| MFR_DEVICE_TYPE | 0xD0 | 2 | Custom | N/A | R/W word | 0x008E |
| MFR_VOUT_READ_CAL_GAIN | 0xD1 | 2 | 16 bit unsigned | N/A | R/W word | 0x2000 |
| MFR_VOUT_READ_CAL_OFF | 0xD2 | 2 | VOUT linear | N/A | R/W word | MS |
| MFR_VIN_READ_CAL_GAIN | 0xD3 | 2 | 16 bit unsigned | N/A | R/W word | MS |
| MFR_VIN_READ_CAL_OFF | 0xD4 | 2 | VIN linear | N/A | R/W word | MS |
| MFR_IOUT_CAL_GAIN | 0xD6 | 2 | 16 bit unsigned | N/A | R/W word | MS |
| MFR_IOUT_CAL_OFFSET | 0xD7 | 2 | IOUT linear | N/A | R/W word | MS |
| MFR_FW_REV | 0xDB | 2 | 8 bit unsigned | N/A | Read byte | 0xMj.Mn.Bh BI |
| MFR_C1_C2_ARA_CONFIG | 0xE0 | 1 | Bit field | N/A | R/W byte | 0x00 |
| MFR_C2_LOGIC | 0xE1 | 1 | Bit field | N/A | R/W byte | 0x00 |
| MFR_PGOOD_POLARITY | 0xE2 | 1 | Bit field | N/A | R/W byte | 0x01 |
| MFR_MOD_DATE_LOC_SN | 0xF0 | 12 | 8 bit char | N/A | R/W block | YYLLWW123456 |

MS=Module specific

Technical Specifications (continued)

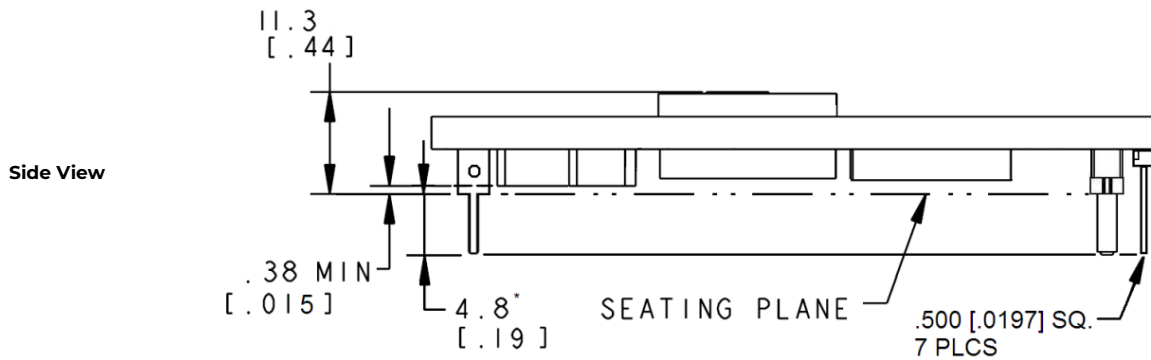
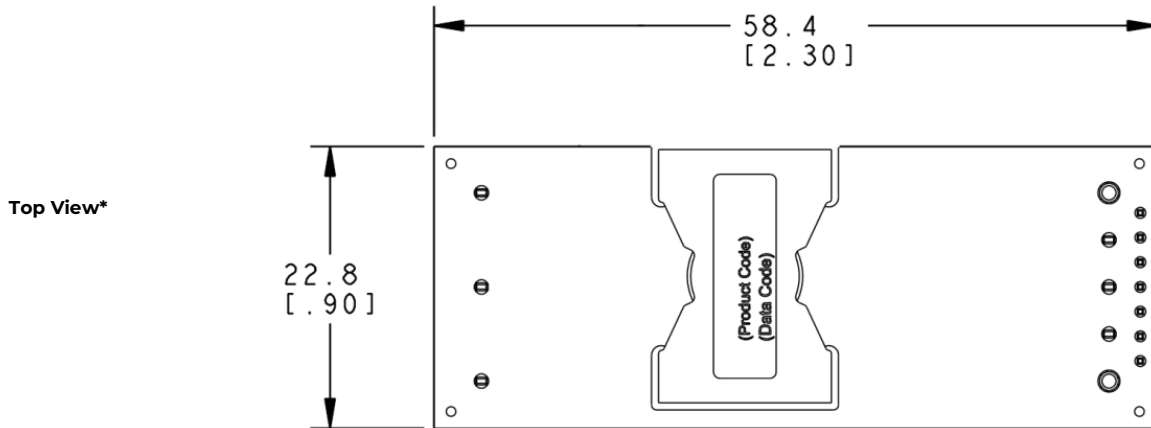
Mechanical Outline for EBDW020A0B Through-hole Module

Dimensions are in millimeters and [inches].

Tolerances: x.x mm ± 0.5 mm [x.xx in. ± 0.02 in.] (Unless otherwise indicated)

x.xx mm ± 0.25 mm [x.xxx in. ± 0.010 in.]

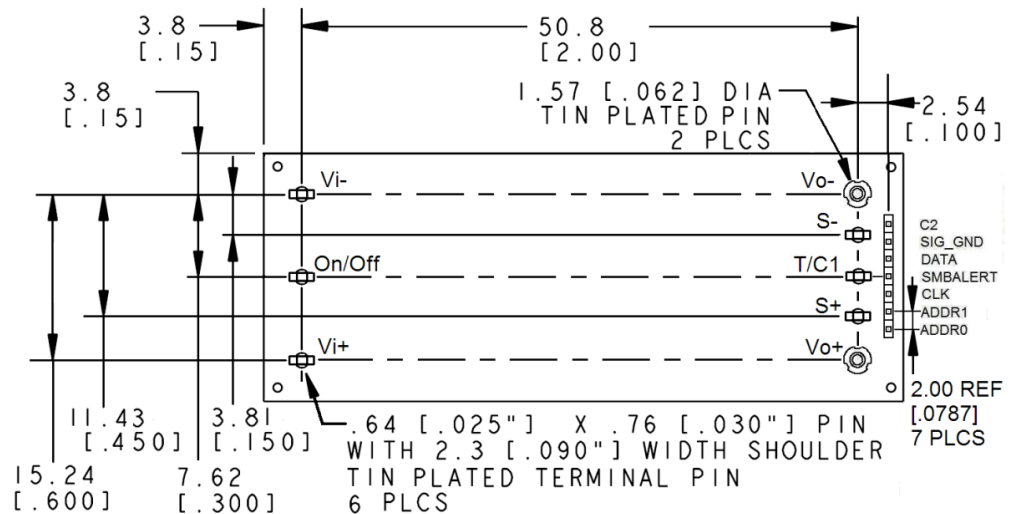
Top side label includes OmniOn name, product designation and date code.



*For optional pin lengths, see Table 2, Device Coding Scheme and Options

Bottom View

| Pin Number | Pin Name |
|------------|----------------------|
| 1 | V _{IN} (+) |
| 2 | ON/OFF |
| 3 | V _{IN} (-) |
| 4 | V _{OUT} (-) |
| 5 | SENSE(-) |
| 6 | TRIM/C1 |
| 7 | SENSE(+) |
| 8 | V _{OUT} (+) |
| 9 | C2 |
| 10 | SIG_GND |
| 11 | DATA |
| 12 | SMBALERT |
| 13 | CLK |
| 14 | ADDR1 |
| 15 | ADDR0 |



Technical Specifications (continued)

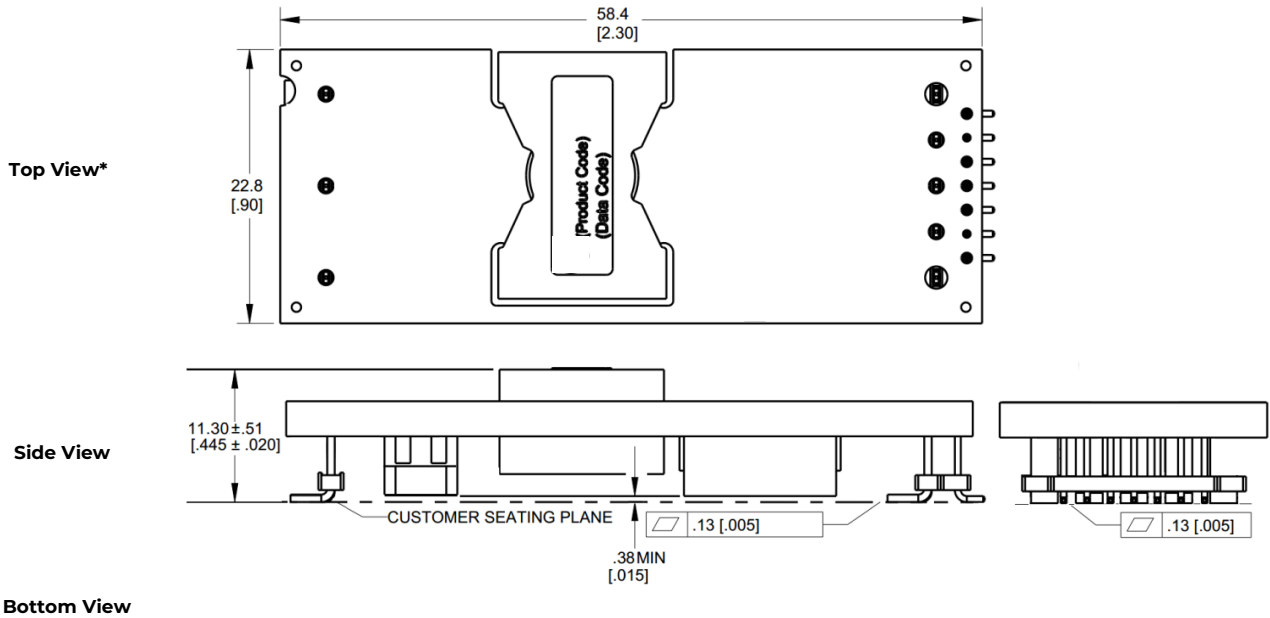
Mechanical Outline for EBDW020A0Bxx-S SMT Module

Dimensions are in millimeters and [inches].

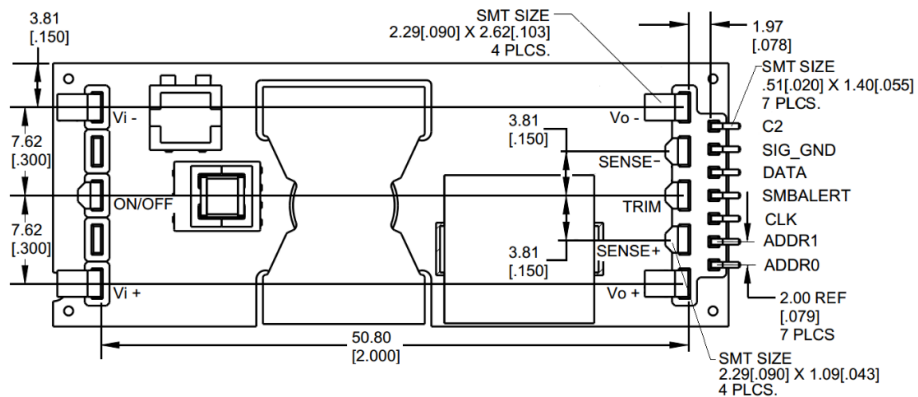
Tolerances: x.x mm ± 0.5 mm [x.xx in. ± 0.02 in.] (Unless otherwise indicated)

x.xx mm ± 0.25mm [x.xxx in ± 0.010 in.]

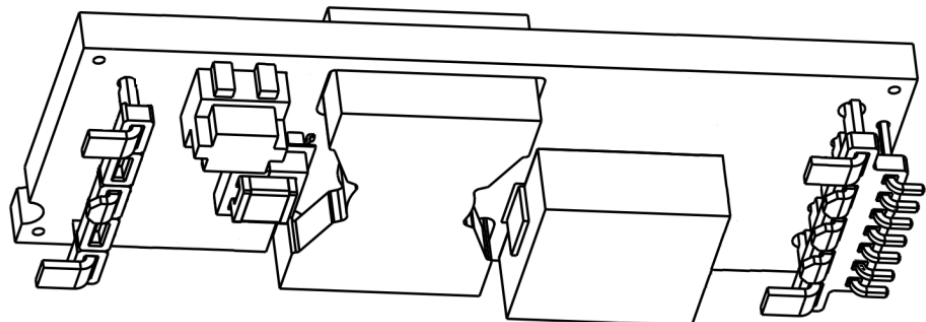
Top side label includes OmniOn name, product designation and date code.



| Pin Number | Pin Name |
|------------|----------------------|
| 1 | V _{IN} (+) |
| 2 | ON/OFF |
| 3 | V _{IN} (-) |
| 4 | V _{OUT} (-) |
| 5 | SENSE(-) |
| 6 | TRIM/C1 |
| 7 | SENSE(+) |
| 8 | V _{OUT} (+) |
| 9 | C2 |
| 10 | SIG_GND |
| 11 | DATA |
| 12 | SMBALERT |
| 13 | CLK |
| 14 | ADDR1 |
| 15 | ADDR0 |



**Isometric View
Bottom Side
(Components removed for clarity)**



Technical Specifications (continued)

Recommended Pad Layouts

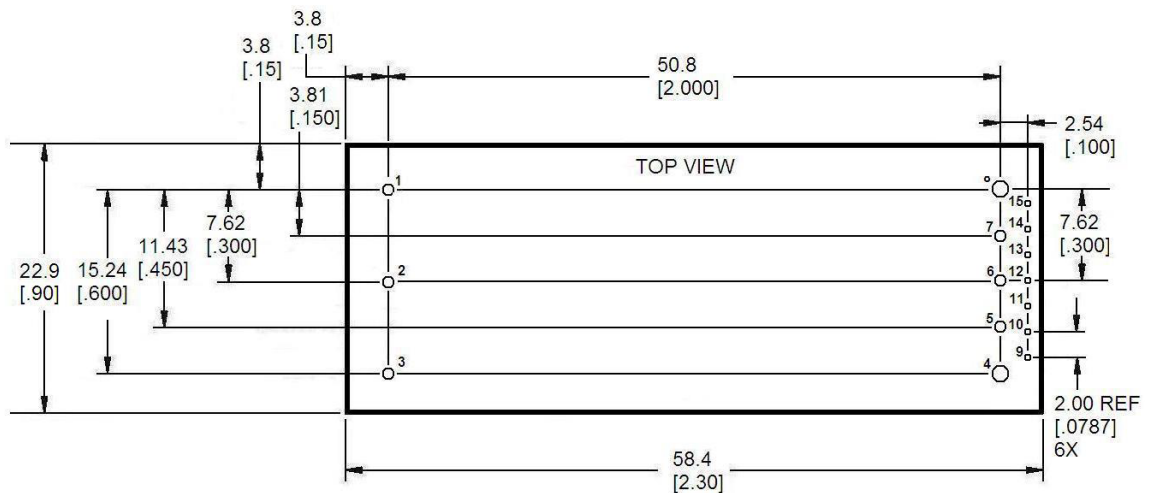
Dimensions are in millimeters and [inches].

Tolerances: x.x mm ± 0.5 mm [x.xx in. ± 0.02 in.] (unless otherwise indicated)

x.xx mm ± 0.25 mm [x.xxx in. ± 0.010 in.]

Through-Hole Modules

| Pin Number | Pin Name |
|------------|----------------------|
| 1 | V _{IN} (+) |
| 2 | ON/OFF |
| 3 | V _{IN} (-) |
| 4 | V _{OUT} (-) |
| 5 | SENSE(-) |
| 6 | TRIM/C1 |
| 7 | SENSE(+) |
| 8 | V _{OUT} (+) |
| 9 | C2 |
| 10 | SIG_GND |
| 11 | DATA |
| 12 | SMBALERT |
| 13 | CLK |
| 14 | ADDR1 |
| 15 | ADDR0 |

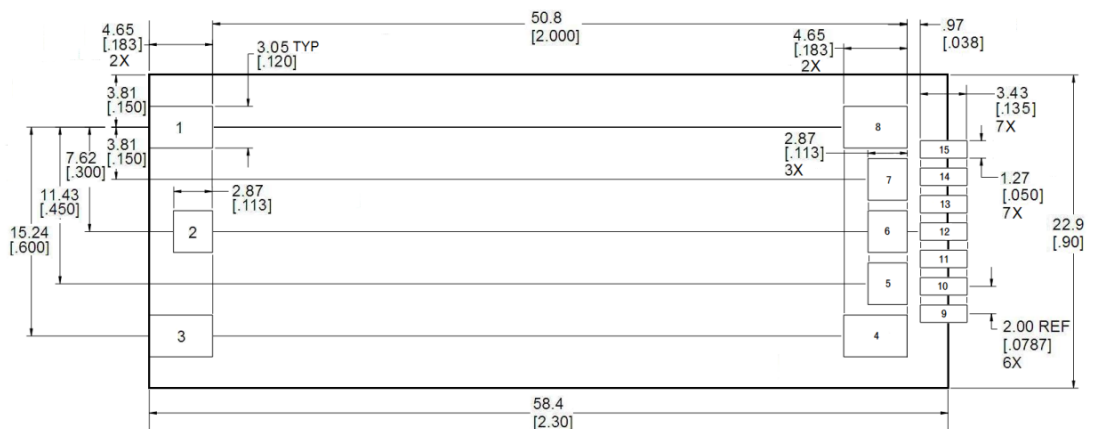


Hole and Pad diameter recommendations:

| Pin Number | Hole Dia mm [in] | Pad Dia mm [in] |
|---------------------------|------------------|-----------------|
| 1, 2, 3, 5, 6, 7 | 1.6 [.063] | 2.1 [.083] |
| 4, 8 | 2.2 [.087] | 3.2 [.126] |
| 9, 10, 11, 12, 13, 14, 15 | 1.0 [.039] | 1.5 [.059] |

SMT Modules

| Pin Number | Pin Name |
|------------|----------------------|
| 1 | V _{IN} (+) |
| 2 | ON/OFF |
| 3 | V _{IN} (-) |
| 4 | V _{OUT} (-) |
| 5 | SENSE(-) |
| 6 | TRIM/C1 |
| 7 | SENSE(+) |
| 8 | V _{OUT} (+) |
| 9 | C2 |
| 10 | SIG_GND |
| 11 | DATA |
| 12 | SMBALERT |
| 13 | CLK |
| 14 | ADDR1 |
| 15 | ADDR0 |



Technical Specifications (continued)

Ordering Information

Please contact your OmniOn Sales Representative for pricing, availability and optional features.

| Product codes | Input Voltage | Output Voltage | Output Current | Efficiency | Connector Type | MSL Rating | Ordering Codes |
|--------------------|-----------------------------|----------------|----------------|------------|----------------|------------|----------------|
| EBDW020A0B41Z | 48V (36-75V _{dc}) | 12V | 20A | 94.8% | Through hole | 2a | CC109167482 |
| EBDW020A0B641Z | 48V (36-75V _{dc}) | 12V | 20A | 94.8% | Through hole | 2a | 150046402 |
| EBDW020A0B41-HZ | 48V (36-75V _{dc}) | 12V | 20A | 94.8% | Through hole | 2a | CC109167490 |
| EBDW020A0B641-HZ | 48V (36-75V _{dc}) | 12V | 20A | 94.8% | Through hole | 2a | 150023769 |
| EBDW020A0B841-HZ | 48V (36-75V _{dc}) | 12V | 20A | 94.8% | Through hole | 2a | 150029356 |
| EBDW020A0B641-02HZ | 48V (36-75V _{dc}) | 12V | 20A | 94.8% | Through hole | 2a | 150027293 |
| EBDW020A0B841-02HZ | 48V (36-75V _{dc}) | 12V | 20A | 94.8% | Through hole | 2a | 150035275 |
| EBDW020A0B641-PHZ | 48V (36-75V _{dc}) | 12V | 20A | 94.8% | Through hole | 2a | CC109170552 |
| EBDW020A0B41-SZ | 48V (36-75V _{dc}) | 12V | 20A | 94.8% | SMT | 2a | 150048139 |

Table 1. Device Codes

| Characteristic | | Character and Position | | | | | | | | | | Definition | | | |
|----------------|---------------------------------------|------------------------|---|-------|---|---|---|---|--|----|--|------------|---|---|---|
| Ratings | Form Factor | E | | | | | | | | | | | | E = Eighth Brick | |
| | Family Designator* | B | D | | | | | | | | | | | BD = BARRACUDA Series, with PMBus interface | |
| | Input Voltage* | | W | | | | | | | | | | | W = Wide Range, 36V-75V | |
| | Output Current* | | | 020A0 | | | | | | | | | | 020A0 = 020.0 Amps Maximum Output Current | |
| | Output Voltage* | | | | B | | | | | | | | | B = 12.0V nominal | |
| Options | Pin Length | | | | | 8 | 6 | | | | | | | Omit = Default Pin Length shown in Mechanical Outline Figures 8 = Pin Length: 2.79 mm ± 0.25mm , (0.110 in. ± 0.010 in.) 6 = Pin Length: 3.68 mm ± 0.25mm , (0.145 in. ± 0.010 in.) | |
| | Action following Protective Shutdown* | | | | | | 4 | | | | | | | 4 = Auto-restart following shutdown (Overcurrent/Overvoltage) Must be ordered, Latching feature configured via PMBus | |
| | On/Off Logic | | | | | | | 1 | | | | | | Omit = Positive Logic 1 = Negative Logic | |
| | Customer Specific | | | | | | | | | xy | | | | xy: 01-09. Altered firmware defaults from base codes xy: 10-99. Customer specific build, hardware and/or default changes | |
| | Optional Features | | | | | | | | | | | S | P | H | 02 = Faster control loop requiring polymer output capacitor and IOUT_OC_FAULT_LIMIT default = 28A Omit = Standard open-frame module S = Surface Mount Connection (SMT) P = Forced Droop Output for use in parallel applications (Trim and Sense feature disabled for -P option) H = Heat plate, for use with heat sinks or cold-walls |
| | RoHS | | | | | | | | | | | | | | Omit = RoHS 5/6, Lead Based Solder Used ZZ = RoHS Compliant |

* Feature may be reconfigured from factory default using PMBus. See Feature Descriptions for additional details.

Table 2. Device Options

Contact Us

For more information, call us at

+1-877-546-3243 (US)

+1-972-244-9288 (Int'l)

Change History (excludes grammar & clarifications)

| Revision | Date | Description of the change |
|----------|------------|--------------------------------|
| 1.6 | 04/08/2022 | Updated ROHS |
| 1.7 | 12/12/2023 | Updated as per OmniOn template |

OmniOn Power Inc.

601 Shiloh Rd.
Plano, TX USA

omnionpower.com

We reserve the right to make technical changes or modify the contents of this document without prior notice. OmniOn Power does not accept any responsibility for errors or lack of information in this document and makes no warranty with respect to and assumes no liability as a result of any use of information in this document.

We reserve all rights in this document and in the subject matter and illustrations contained therein. Any reproduction, disclosure to third parties or utilization of its contents – in whole or in parts – is forbidden without prior written consent of OmniOn Power. This document does not convey license to any patent or any intellectual property right. Copyright© 2023 OmniOn Power Inc. All rights reserved.